

# Somalia Rainfall Forecast

Issued: 13 November 2017

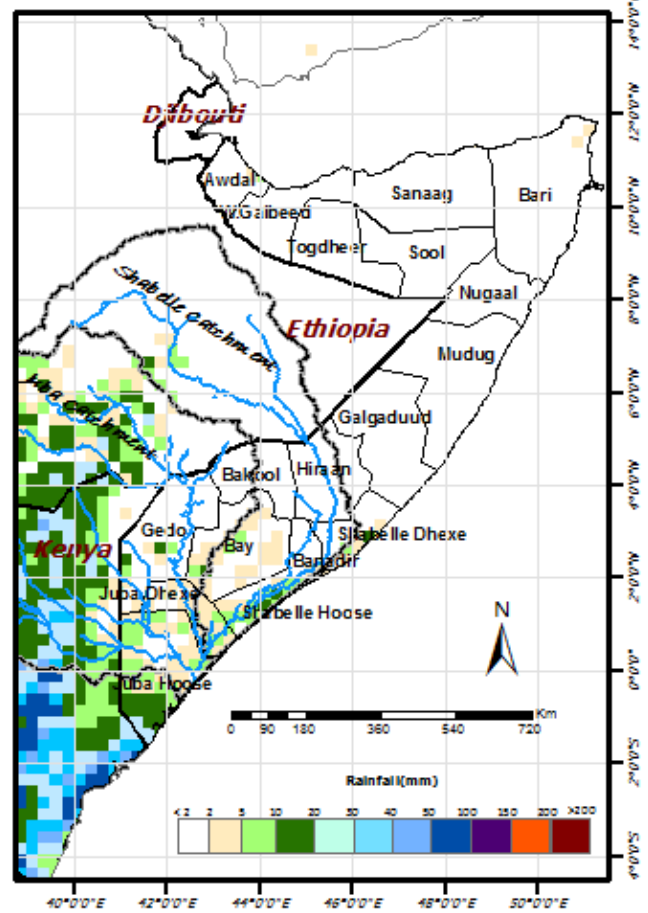
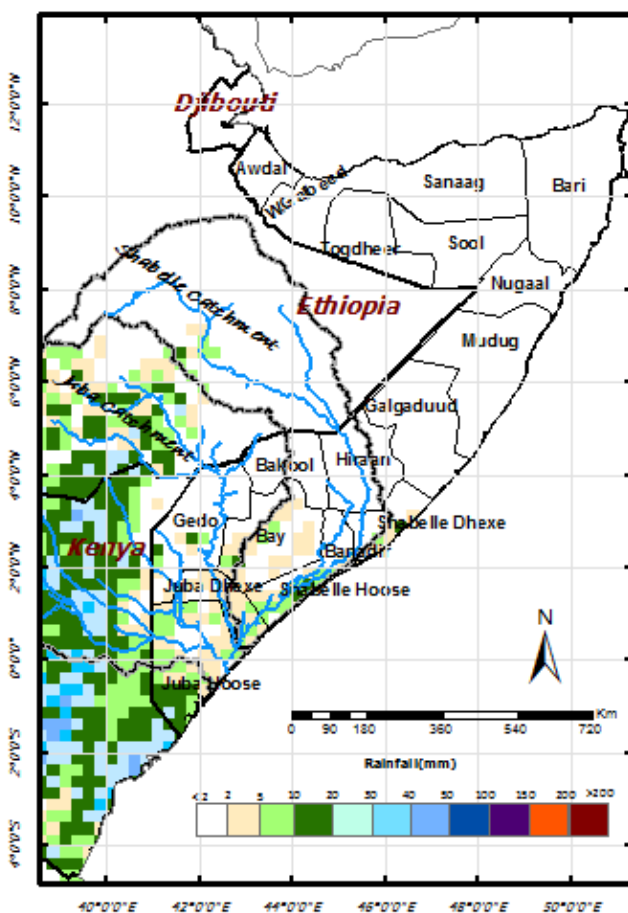
The last 10 days have seen extremely heavy rains in some parts of southern and central regions of Somalia causing flooding and displacements in a few places. Bay region saw the heaviest amounts of rainfall with some station surpassing the annual average rains in a few days.

Rainfall activities are expected to decrease in the coming week given the 3 days and one week rainfall forecasts in Map 1 and Map 2 respectively. There remains a **moderate** to **high** risk of flooding in the middle and lower reaches of both Juba and Shabelle rivers where the river levels are currently very high.

Users are advised that this is a forecast and at times there may be discrepancies between forecast and actual amounts of rainfall received. The forecast, observed river levels and rainfall amounts are updated on a daily basis and can be found on this link: <http://systems.fao.org/frims/>

Map 1: 3 days rainfall forecast (13-15 November 2017)

Map 2: 7-day cumulated rainfall forecast (13-19 November 2017)



This update is produced by the: FAO - Somalia Water and Land Information Management—SWALIM. For more information regarding this product please contact [SO-hydro@fao.org](mailto:SO-hydro@fao.org) or visit <http://www.faoswalim.org>

SWALIM Technical Partners

SWALIM Funding Agencies

