



# Flood Watch Somalia

Issued: 15 November 2005



**SWALIM**

## FLOOD WARNING LEVEL

	Last Week	This week	Next Week
Shabelle			
Juba			

Key To Warning Levels

Severe Flooding Possible

Moderate Flooding (up to 5 year return period)

Minimal Flood Risk

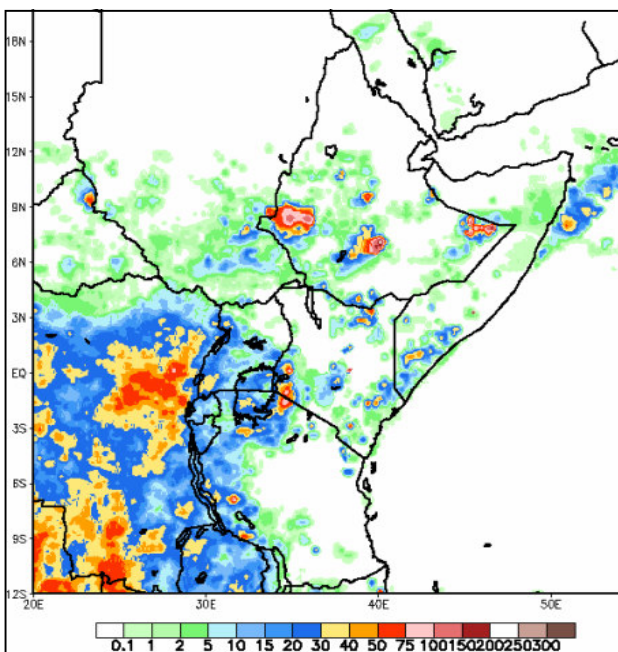
The 7-day Rainfall Estimates (RFE) for the week ending November 13th indicate low rainfall in the upper catchments of both rivers.

No rains were reported in Bulo Burti and Belet Weyne for the last week. No rain has been reported in Luug and Bardhere. 76mm of rain fell was reported from Buale over the weekend.

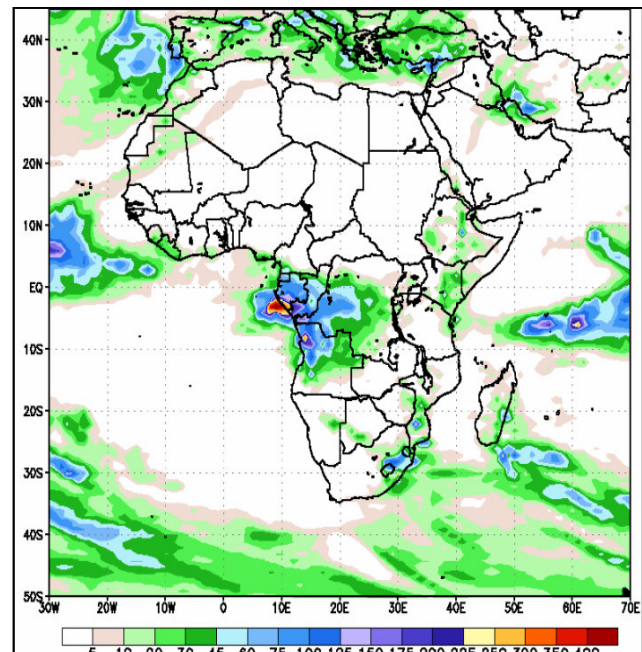
The rainfall forecast for the coming week is for up to 45 mm of rain in the Ethiopian catchments and for between 10-20 mm in the Southern Somalia. Rainfall of up to 45mm is expected over North Eastern Kenya, and South Western Somalia.

Flood risk for the forecast period is considered minimal.

**Total rainfall week ending 13/11/05**



**7-Day Rainfall Forecast from 14/11/05**



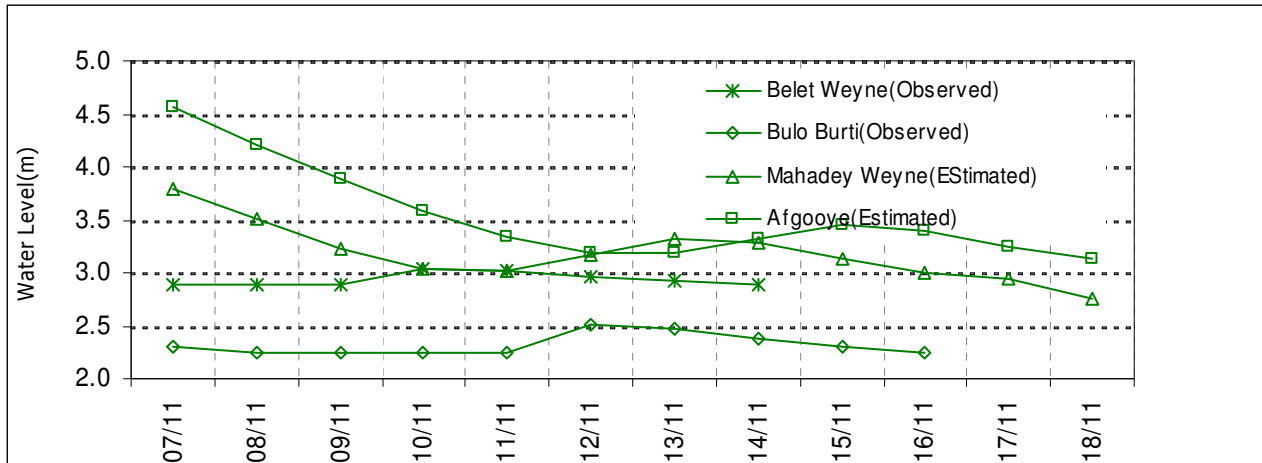
This bulletin is produced by FAO Somalia Water and Land Information Management (SWALIM) Project and USGS/FEWS NET Somalia. SWALIM and USGS/FEWS NET acknowledge Care Somalia, CINS & SCUUK for their continued assistance.

For more information e-mail [hydro@faoswalim.org](mailto:hydro@faoswalim.org)

**Shabelle**

Observed river levels have been fluctuating mildly at both Belet Weyne and Bulo Burti over the last week. Minimal flood risk to Hiran and Middle Shabelle is forecast. The localised flooding reported on the Lower Shabelle last week has been receding. In the absence of rainfall on the area this trend is expected to continue. The risk of more localised flooding on the Lower Shabelle is considered low.

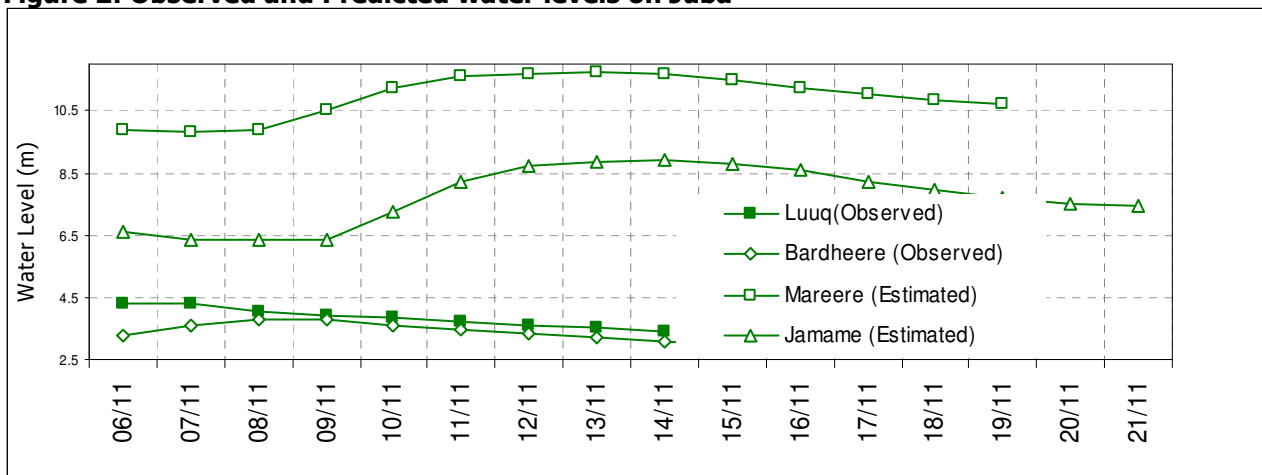
**Figure 1: Observed and Predicted water levels on Shabelle**



**Juba**

Observed river levels have decreased gradually over the last week at Luuq and Bardheere and this trend is expected to continue over the forecast period. Flood risk in Gedo and Middle Juba remains minimal. River levels in Middle Juba have been decreasing. This decrease is expected to continue over the forecast period, reducing the risk of localized flooding. This drop in river levels should also alleviate the localised flooding predicted last week.

**Figure 2: Observed and Predicted water levels on Juba**



Bank full water levels					
Shabelle		Level	Juba		Level
Belet Weyne		7.0	Luuq		7.0
Bulo Burti		8.0	Bardheere		6.6
Mahadey Weyne		5.5	Mareere		10.9
Afgooye		5.8	Jamame		6.9



**USAID**  
FROM THE AMERICAN PEOPLE



**Save the Children**



This bulletin is produced by FAO Somalia Water and Land Information Management (SWALIM) Project and USGS/FEWS NET Somalia. SWALIM and USGS/FEWS NET acknowledge Care Somalia, SCUUK & CINS for their continued assistance.

SWALIM is funded by The European Union. USGS is funded by OFDA—USAID. FEWS NET is funded by USAID.

For more information contact SWALIM, e-mail [hydro@faoswalim.org](mailto:hydro@faoswalim.org)