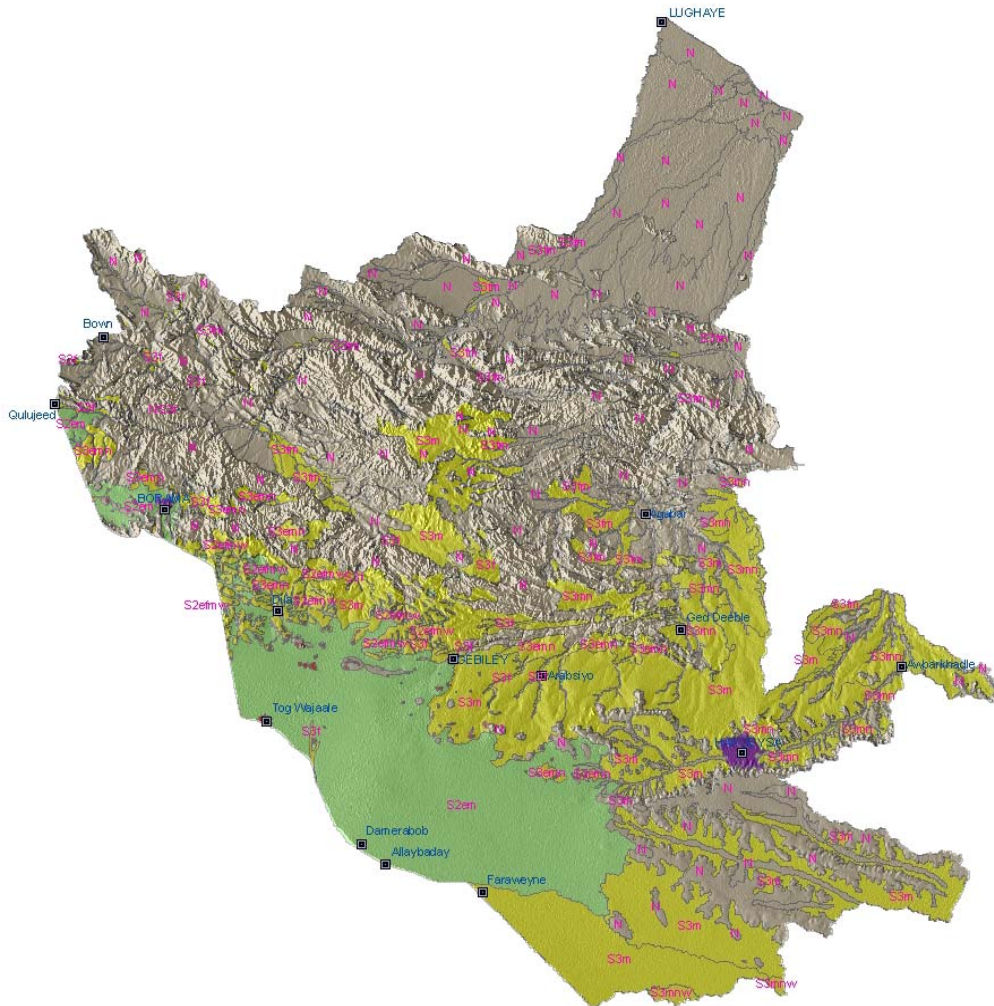




# Land Suitability Assessment of a Selected Study Area in Somaliland



Project Report No. L-06

July 2007

Somalia Water and Land Information Management  
Ngecha Road, Lake View. P.O Box 30470-00100, Nairobi, Kenya.  
Tel +254 020 4000300 - Fax +254 020 4000333,  
Email: [enquiries@faoswalim.org](mailto:enquiries@faoswalim.org) Website: <http://www.faoswalim.org>.



The designations employed and the presentation of material in this information product do not imply the expression of any opinion whatsoever on the part of the Food and Agriculture Organization of the United Nations concerning the legal status of any country, territory, city or area or of its authorities, or concerning the delimitation of its frontiers or boundaries.

This document should be cited as follows:

Venema, J.H. and Vargas, R.R. 2007. Land Suitability Assessment of a Selected Study Area in Somaliland. FAO-SWALIM Technical Project Report L-06. Nairobi, Kenya.

## TABLE OF CONTENTS

### List of Acronyms

### Acknowledgment

1	INTRODUCTION.....	1
2	STUDY AREA.....	1
2.1	Location and delineation.....	1
2.2	Climate.....	1
2.3	Geology/Lithology .....	2
2.4	Landform and Soils.....	2
2.5	Land cover .....	5
2.6	Land Use.....	5
2.6.1	Rainfed Agriculture .....	5
2.6.2	Irrigated Orchards .....	5
2.6.3	Transhumance Pastoralism.....	6
2.6.4	Hay Production and Grazing .....	7
2.6.5	Wood Collection for Charcoal Burning .....	7
2.6.6	Sedentary-Pastoralism .....	7
2.7	Population.....	7
3	MATERIALS.....	10
3.1	Land Resources data.....	10
3.1.1	Simplified Soil Grouping for Land Evaluation .....	10
3.1.2	Length of Growing Period (LGP) and rainfall variability .....	10
3.1.3	Temperature classes .....	10
3.1.4	Simplified Landform information for Land Evaluation.....	14
3.1.5	Simplified Landcover information for Land Evaluation.....	15
4	METHODS.....	16
4.1	Somalia Automated Land Evaluation System (SOMALES) .....	16
4.1.1	Objectives and principles of land evaluation.....	16
4.1.2	Resource Base Units.....	17
4.1.3	Land qualities and land characteristics .....	18
4.1.4	Land use types and their requirements .....	18
4.1.5	Matching land qualities with land use requirements .....	23
4.1.5.1	Factor ratings; severity levels; limitations .....	23
4.1.5.2	Decision trees, scoring.....	23
4.1.6	Land suitability classification .....	24
4.1.7	Verification of preliminary results .....	24
5	RESULTS .....	25
5.1	Land suitability for rainfed agriculture .....	25
5.2	Land suitability for irrigated agriculture (orchards) .....	32
5.3	Land suitability for extensive grazing (pastoralism) .....	33
5.4	Land suitability for forestry .....	40
5.5	Summary of suitability for the major types of land use .....	50
6	FURTHER DEVELOPMENT OF LAND EVALUATION PROCEDURE .....	51
7	BIBLIOGRAPHY.....	52

## List of Annexes

Annex 1: Resource Base Units.....	55
Annex 2: Resource Base Units, subsoil properties.....	59
Annex 3: Crop requirements .....	60
Annex 4: Requirements forestry species .....	60
Annex 5: Use forestry species .....	62
Annex 6: SOMALES: Severity level decision trees for Rainfed Agriculture.....	63
Annex 7: SOMALES Severity level decision trees for Pastoralism .....	77
Annex 8: SOMALES: Severity level decision trees for Forestry.....	85

## List of Tables

Table 1: Crop Calendar Rainfed Agriculture .....	6
Table 2: Regions, districts, and their populations (Somalia UNDP 2005, draft version).....	7
Table 3: Simplified Soil Classes for Land Evaluation.....	11
Table 4: Soil characteristics used for Land Evaluation .....	12
Table 5: Length of longest LGP and rainfall variability during GP for all LGP Zones of Somalia.....	13
Table 6: Total LGP and annual rainfall variability of the 15 LGP Zones of Somalia.....	13
Table 7: Estimated carrying capacity of Bioclimatic Zones and corresponding LGP Zones .....	14
Table 8: Mean annual temperature classes for Somalia and correlation with altitude zones.....	14
Table 9: Simplified relief classes for land evaluation .....	14
Table 10: Slope classes for land evaluation .....	15
Table 11: Aggregated landcover classes of study area for land evaluation.....	15
Table 12: Diagnostic Land Qualities for selected major types of land use .....	22
Table 13: Land Use Types.....	22
Table 14: Land Suitability for Rainfed Agriculture .....	26
Table 15: Land Suitability for Rainfed Agriculture (summary).....	27
Table 16: Estimated total area of irrigable land in study area.....	32
Table 17: Land Suitability for Extensive Grazing.....	34
Table 18: Land Suitability for Extensive Grazing (summary) .....	35
Table 19: Land Suitability for Forestry .....	41
Table 20: Land Suitability for Forestry (Summary) .....	43

## List of Figures

Figure 1: Study area.....	1
Figure 2: Rainfall distribution and climate classification of the study area.....	3
Figure 3: Rainfall (P), Potential Evapotranspiration (PET) and 0.5PET .....	4
Figure 4: Methodological framework.....	17
Figure 5: Identification of the RBU's.....	18

## List of Maps

Map 1: Land Use .....	9
Map 2: Resource Base Units.....	21
Map 3: Land suitability for Rainfed Agriculture: sorghum.....	29
Map 4: Land suitability for Rainfed Agriculture: maize.....	31
Map 5: Land suitability for Extensive Grazing: camels.....	37
Map 6: Land suitability for Extensive Grazing: goats.....	39
Map 7: Land suitability for Forestry: Azadirachta indica (neem).....	45
Map 8: Land suitability for Forestry: Acacia nilotica (maraa) .....	47
Map 9: Land suitability for Forestry: Conocarpus lancifolius (dhamas, ghalab).....	49

## List of acronyms

ALES	Automated Land Evaluation System
FAO	Food and Agriculture Organization
GIS	Geographical Information System
GP	Growing Period
LCCS	Land Cover Classification System
LC	Land Characteristic
LGP	Length of Growing Period
LQ	Land Quality
LUR	Land Use Requirement
LUT	Land Use Type
masl	meters above sea level
NGO	Non Governmental Organization
PET	Potential Evapotranspiration
RBU	Resource Base Unit
SOMALES	Somalia Automated Land Evaluation System
SWALIM	Somalia Water and Land Information Management

## **ACKNOWLEDGMENTS**

The authors wish to acknowledge the considerable support given by the Project Task Force, especially Dr. Hubert George for his technical support in the generation of the resources base map.

Thanks should be addressed to Mr. Simon Mumuli Oduori for his contribution in the crop requirements and Prof. Musse Shaie Alim for the validation of the preliminary land evaluation results.

Many thanks go to Mr. Ali Ismail for his valuable technical comments.

Finally we want to express our acknowledgment to all technical and administrative SWALIM staff, especially to Antony O. Ndubi for his valuable work in the edition of the maps.

## 1 INTRODUCTION

Knowledge of the land and water resources is a key component for planning the development of any region. This knowledge is used in land suitability assessments, which determine the potentiality of the land (land resources supply) for different land use types (land user demand).

Land evaluation is the process of predicting land performance over time according to specific types of use (Dent and Young, 1981; FAO, 1983; Rossiter, 1996). It is a very important step in land use planning which according to FAO (1985) is the systematic assessment of land and water potential and alternatives for land use and economic and social conditions in order to select and adopt the best land use options.

The present study is based on land resource data collected by the SWALIM team in the period 2005 – 2006 as detailed in various SWALIM Land Reports and uses established and tested FAO methodology to assess land suitability for various types of land agricultural land use.

Major types of land use considered are rainfed agriculture (crops), irrigated agriculture, extensive grazing (pastoralism) and plantation forests. Results are presented in the form of Tables, Maps and narratives.

The results presented do not constitute a land use plan, but only form one of the many inputs for such a plan. If an area has been classified as highly suitable for a certain use, it does not necessarily mean that this use is recommended. Land use recommendations should be based on many socio-economic and cultural factors, in addition to a physical suitability assessment. However, if a certain area has been classified as physically unsuitable for a certain use, it is unlikely that this use will ever be considered in a comprehensive land use plan.

In addition to giving a land suitability assessment of the study area, this report also gives details of the Somalia Automated Land Evaluation System (SOMALES). This system is also applied for a SWALIM study area in southern Somalia and can be used for similar exercises in the future. Not only can other areas be studied in a similar way, also other types of land use can be analyzed through SOMALES.