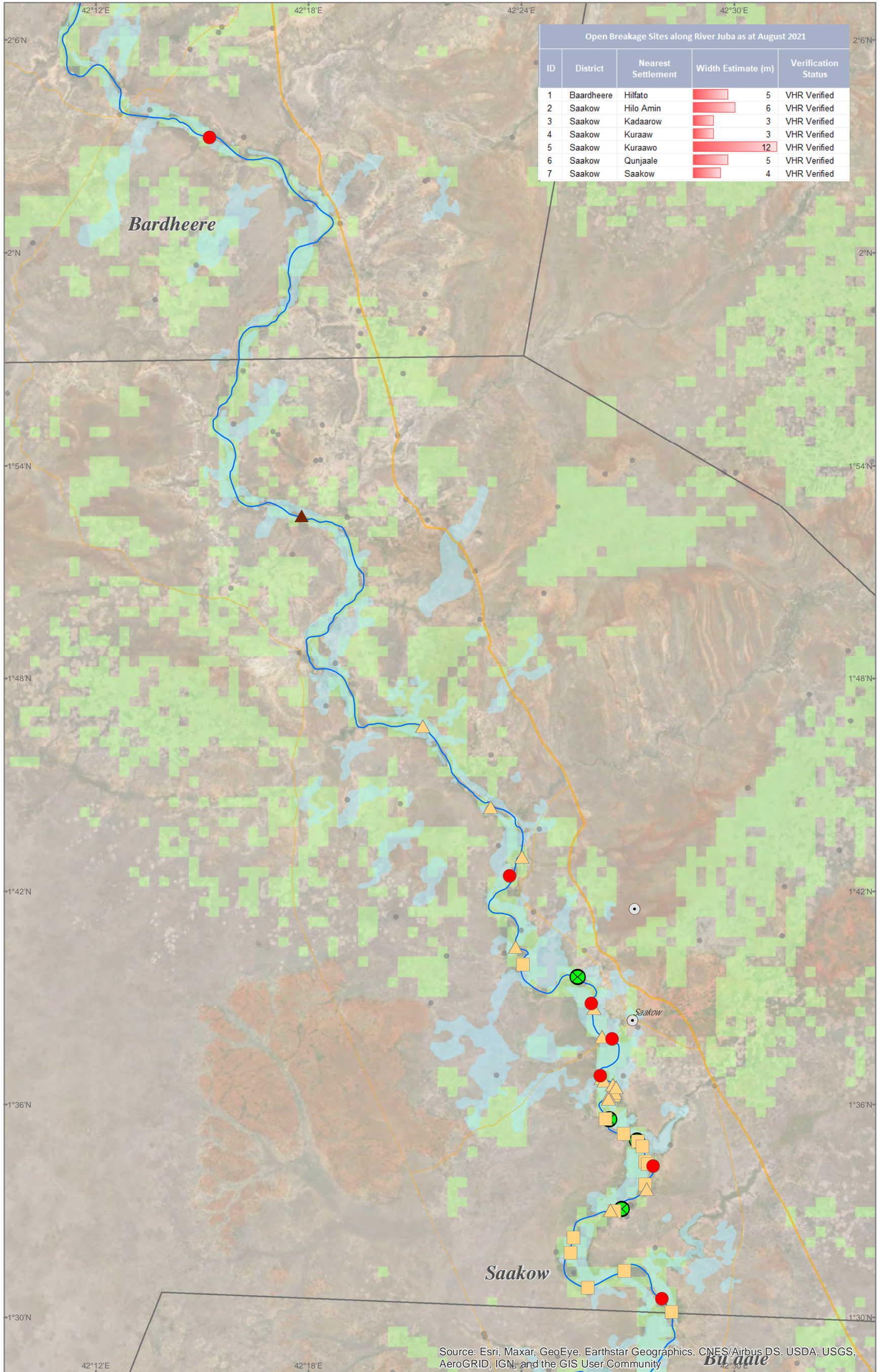




AFRICA - Somalia



SOMALIA - River Juba



Legend

- Open - Verified Breakage (7)
- ▲ Overflow - Verified Breakage (1)
- Potential Breakage (15)
- ▲ Potential Overflow (15)
- ⊗ Closed with Sandbag (4)
- Settlement
- Major Town
- ★ National Capital
- District Capital
- River
- Major Road
- Minor Road
- District Boundary
- Agriculture
- Historical Flood Extent

Map Information

Map Reference:
SOM_WAT_SAAKOW_JUBA_RIVER_BREAKAGES_SWALIM_25082021_A3

Produced by:
The Somalia Water and Land Information Management Project (SWALIM).

SWALIM is a multi-donor project implemented by the United Nation's Food & Agriculture Organization

For copies of digital data please contact: swalim@fao.org

Caution:
Verified Breakage : Confirmed this season through VHR Images and/ Field Verification

Not Verified Breakage: Confirmed in previous season but there was either cloudy or no VHR Image for assessment this season

Satellite data: WV2/WV3
Imagery dates: Mar 2019 - Aug 2021
Imagery resolution: 0.3 - 0.5 Meter
Imagery source: Digital Globe, Airbus
Other dataset: FAO-SWALIM, UNDP
Analysis: FAO-SWALIM
Map projection: Geographic
Datum: WGS 84

Source: Esri, Maxar, GeoEye, Earthstar Geographics, CNES/Airbus DS, USDA, USGS, AeroGRID, IGN, and the GIS User Community

