

## SOMALIA WEEKLY WEATHER FORECAST

Valid From 3rd to 9th May 2023

**Moderate to heavy rainfall is expected over central and northwestern parts of Somalia, light rains over southern and northeastern parts and dry conditions in the Gedo Region**

### Weather Review for 26th April to 2nd May 2023

Wet conditions were observed in most areas of Somalia over the last week with up to sixty nine (69) stations recording at least 1 mm of rainfall. Graph 1 shows the stations that recorded cumulative rainfall amounts above 30 mm. The stations that received at least 50 mm of cumulative rainfall were Las Anod (110 mm), Widh widh (75 mm), and Caynabo (63 mm) in Sool region, Bu'alle (98 mm) in Middle Juba region, Aburin (90.5 mm), Sayla (78 mm), and Dararweyne (55 mm) in Woqooyi Galbeed, Wanlewayne (89.7 mm) in Lower Shabelle region, Dhahar (75 mm) in Sanaag region, Bardheere (74 mm) in Gedo region, Dangoronyo (72.6 mm) in Bari region, Balidhiig (60 mm), Gacan-libah (60 mm), Xaji Salah (58.5 mm), and Burao (56.5 mm) in Togdheer region and Galkacyo (54 mm) in Mudug region.

The stations that received intense rains of more than 30 mm per day include Dangoronyo (72.6 mm/day) in Bari region, Caynabo (63 mm/day) in Sool region, Balidhiig (60 mm/day), Galkacyo (54 mm/day) in Mudug region, Mogadishu (49.8 mm/day), Gumburaha (41 mm/day) in Woqooyi Galbeed, Burtinle (40 mm/day) and Xasbahale (39 mm/day) in Nugaal region, and Gargara (37 mm/day) in Awdal region. The best temporal distribution of cumulative rains were received over a period of four days at Bu'alle (98 mm) in Middle Juba region, Aburin (90.5 mm) in Woqooyi Galbeed and Xaji Salah (58.5 mm) in Togdheer region within the last week.

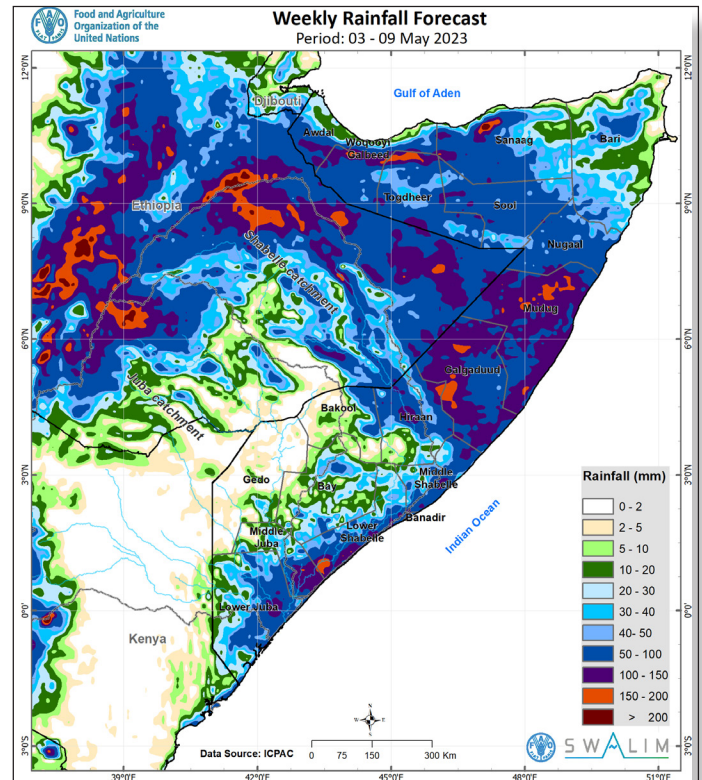
Several villages were evacuated in the northeastern part of Belet Weyne district on 1st May due to canal flooding.

### Weather Forecast for 3rd to 9th May 2023

According to the weekly forecast, moderate to heavy rainfall is expected over several areas in central and northwestern parts of Somalia with light rains over southern and northeastern parts during the forecast period (*Map 1*). The spatial variation of the cumulative rainfall amounts is as follows:

**Very heavy rainfall** of more than 150 mm is likely to be observed over Sablaale and Baraawe districts in Lower Shabelle Region; western parts of Ceel Buur district and central parts of Dhuusamarreeb district in Galgaduud Region; Xarardheere district, northern parts of Hobyo district, eastern parts of Gaalkacyo district and western parts of Jariiban district in Mudug region. Rains of similar amounts are also predicted over Sheikh district in the northern part of Togdheer region and the northern border between Gebiley and Hargeisa districts in Woqooyi Galbeed. Very heavy rains which may exceed 200 mm are expected over the northern parts of Ceerigaabo district in Sanaag region.

**Heavy rainfall** of between 100 mm and 150 mm is expected over several areas in Mudug and Galgaduud regions; central parts of Hiraan region, the border between Afmadow, Kismaayo and Jamaame districts in Lower Juba region; Jilib district in Middle Juba region; coastal areas of Lower Shabelle region, the central areas of Adan Yabaal district and the border between Balcad and Cadale districts in Middle Shabelle region. Rainfall of similar



Map 1: Cumulative rainfall forecast over Somalia between 3rd and 9th May 2023

amounts is likely over the northern part of Togdheer region; the northern border between Gebiley and Hargeisa districts in Woqooyi Galbeed; southern parts of Awdal region; western parts of Ceel Afweyn and northern parts of Ceerigaabo district in Sanaag region.

**Moderate rainfall** of between 50 mm and 100 mm is predicted over several areas in Nugaal region, central and northern parts of Awdal region, central and southern parts of Woqooyi Galbeed region, northern and southern parts of Togdheer region, central and western parts of Sanaag region, central and northern parts of Sool region, and some areas in the central parts of Bari region. Comparatively moderate rainfall is also expected over Galdogob district, western parts of Gaalkacyo district, northern parts of Jariiban district and western parts of Hobyo district in Mudug region, eastern parts of Galgaduud region, central and northern parts of Hiraan region, Balcad, Cadale and Adan Yabaal districts in Middle Shabelle region, near-coastal parts of the entire Lower Shabelle region, Bu'ale district in Middle Juba and Kismaayo, Jilib and eastern parts of Afmadow district in Lower Juba.

**Light rains** of less than 50 mm are expected over several areas in Bari region, eastern parts of Sanaag region, northern parts of both Woqooyi and Awdal regions, Bay region, central and eastern parts of Bakool region, southwestern parts of Hiraan region and its entire border with Middle Shabelle region, Wanla Weyn in Lower Shabelle region. In the south, similar light rains are expected over western Afmadow in Lower Juba, Saakow in Middle Juba region, northern Bardheere in Gedo region.

**Dry conditions** are expected in the southwestern parts of the country particularly Gedo region, Waajid, Ran Dhuure, western parts of Ceel Barde and southern parts of Tayeeglow districts in Bakool region, and the coastal areas of Bari region.

Moderate temperatures of between 24°C and 28°C are expected over several areas in the southern and northern parts of the country. Temperatures as low as 20°C are likely over some areas in the southern parts of Awdal and Woqooyi Galbeed regions, Sheikh district in northern Togdheer region and Ceerigaabo in Sanaag region. High temperatures of between 28°C and 32°C are expected in the central regions and some parts in the south and northern parts of the country.

### Current River Levels

The level along Shabelle River at Belet Weyne has increased from 6.38 m on 26th April to 7.50 m, 20 cm above the high risk threshold, as reported on 4th May 2023. At 3.80 m as of 4th May, the river level at Jowhar has generally been stable and below the moderate flood risk level (5.0 m). At Bulo Burti, the river level that had steadily risen to 6.55 m on 26th April, slightly above the moderate flood risk level (6.5 m), has dropped to 5.74 m on 4th May.

The rains observed in the last week led to a general rise in the levels along Juba River. Compared to observations made on 26th April, river levels recorded on 4th May represent a rise from 4.08 m to 5.04 m at Dollow, from 4.36 m to 5.12 m at Luuq, and from 7.20 m to 7.70 m at Bualle. The river level at Dollow is 4 cm above the high flood risk level. Although river level at Bardheere dropped from 9.0 m to 7.52 on 4th May, it is still 12 cm above the moderate flood risk level.

Figures 1 and 2 show the current river levels against the Short Term Mean and 2022 levels for Luuq and Belet Weyne stations respectively.

### Impacts Associated with the Weekly Weather Forecast

The rains are progressing northwards into the Galmudug region with dry conditions expected over the southwestern parts of the country particularly Gedo region. Light rains are expected over Juba River catchment and moderate rains over Shabelle catchment in Ethiopian highlands.

Although there is a high risk of flooding along Shabelle River at Belet Weyne and along Jubba River at Dollow, and moderate risk of flooding along Juba River at Bardheere, river levels are expected to remain stable and below moderate flood risk levels in the coming week given the above rainfall conditions.

The expected moderate to heavy rainfall expected over central to northern and coastal parts of the country will lead to substantial recharge of surface water sources and sustenance of the regenerated vegetation which is important for human and livestock survival.

Even with the forecast moderately high temperatures (28°C to 32°C), the forecast heavy rains, together with the previous rains, are likely to exceed the evaporation thereby sustaining the soil water and supporting vegetation regeneration. These conditions are therefore favorable for late planting in the central and northwestern parts of the country. However, the heavy rainfall may lead to disturbance of the topsoil thereby reducing its productivity. The dry conditions over southwestern parts particularly over Gedo are favorable for weeding.

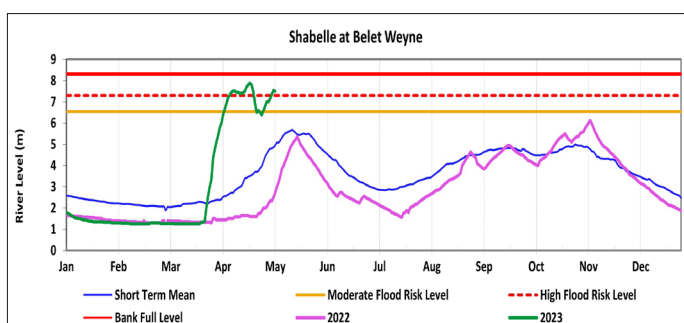


Figure 1: Shabelle river level at Belet Weyne gauging station

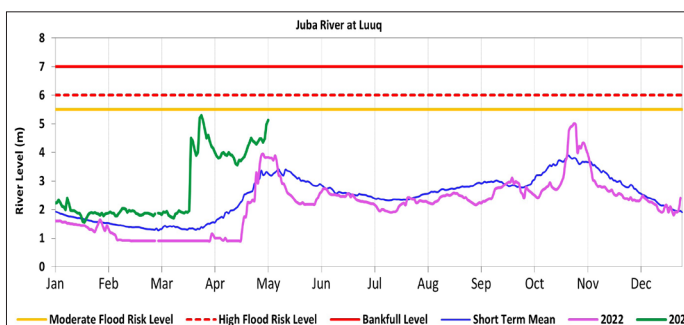
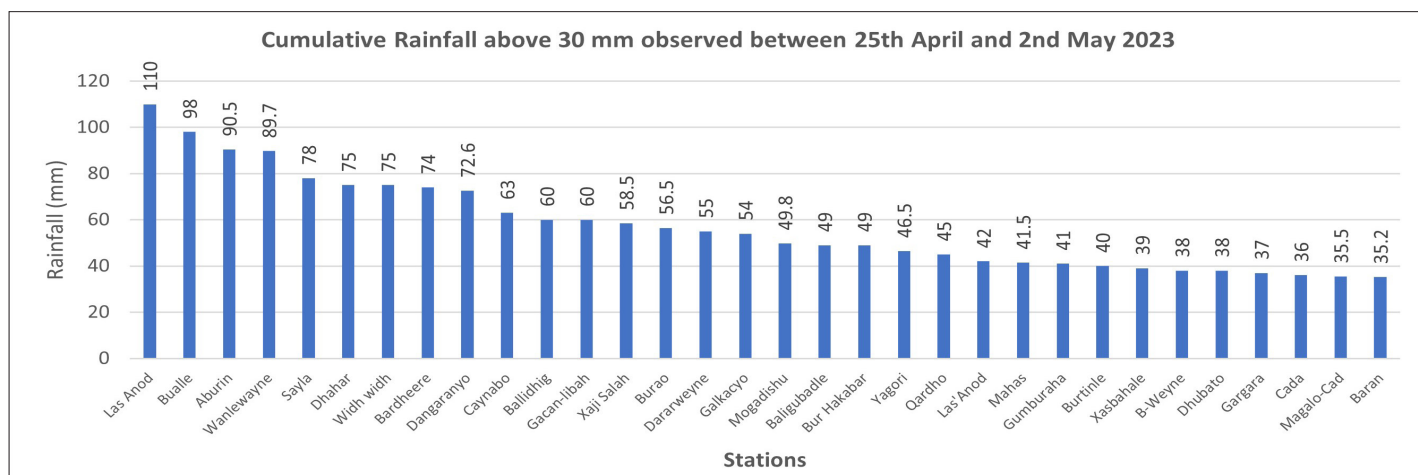


Figure 2: Juba river level at Luuq gauging station



Graph 1: Cumulative rainfall (mm) observed at different stations between 26th April and 2nd May 2023 across Somalia

SWALIM is a multi-donor project managed by FAO and currently funded by The European Union, SDC, Government of France and USAID



Funded by the European Union

