

## SOMALIA WEEKLY WEATHER FORECAST

Valid From 9 - 15 April 2025

### Forecast Highlight:

- Light rains are expected in several areas across the country
- Chances of moderate intense rains over isolated areas in Afmadow (Lower Juba), Baydhaba (Bay), and Wanla Weyne (Lower Shabelle) regions
- Most northern parts of Awdal region and coastal parts of Mudug, Nugaal and Bari will likely remain dry

### Review Summary:

- Light rains were generally observed in the southern parts of Somalia
- A significant but low risk rise in the levels of Shabelle River is likely
- Juba River levels are likely to rise steadily
- Isolated intense storms in Afmadow, Baydhaba and Wanla Weyne may lead to flash floods

### Weather Review

In the last one-week (1 - 7 April 2025), light rains were generally observed in the southern parts of Somalia with moderate amounts in some parts of Lower Juba region particularly over Luuq (66.0 mm). The following individual stations recorded light cumulative rains of below 20.0 mm during the same period: Baidoa (17.5 mm), Buur Hakaba (15.0 mm) and Qansax Dhere (13.5 mm) in Bay region and Mahaday Wayn (4.0 mm) in Middle Shabelle region.

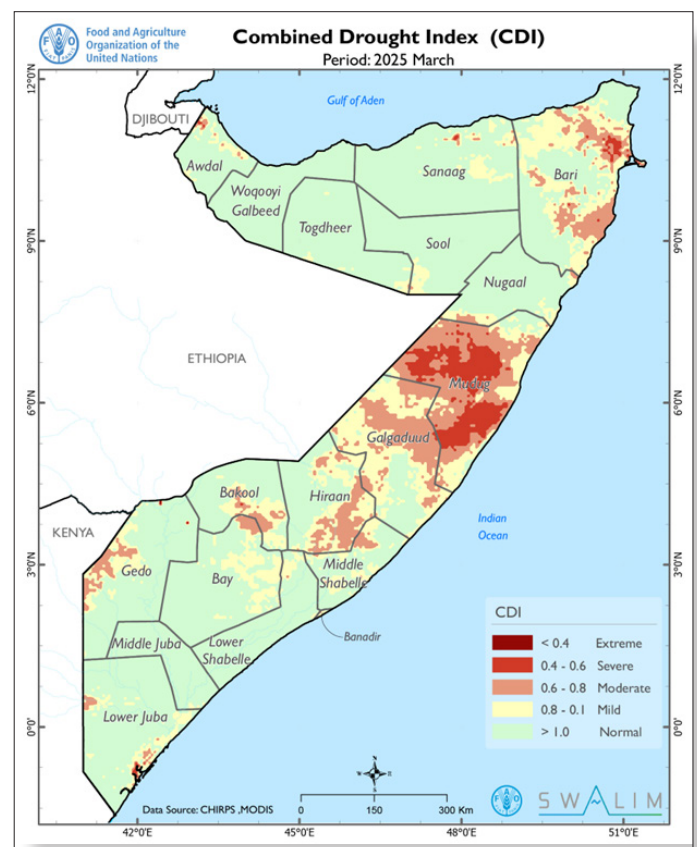
### Evolution of Drought Conditions

As of 31 March 2025, and based on combined drought index (Map 1), extreme to severe drought is likely over central and southern parts of Mudug region; and central and coastal parts of Iskushuban district in Bari region. These areas are likely to be experiencing very poor vegetation health, water scarcity, and stressed livelihoods especially for agropastoral and pastoral systems. Moderate drought conditions are likely over most other parts of Mudug region; Dhusamarreeb and Cabudwaaq districts and eastern parts of Ceel Buur district in Galgaduud region; Qandala district and northern parts of Bandarbeyla district in Bari region; Jalalaqsi and Bulo Burte in Hiraan region; Ceel Waaq and Belet Xaawo district in Gedo region; southern parts of Xudur district in Bakool region; northern parts of Baydhaba district in Bay region. Similar moderate drought conditions are also observed over the following scattered areas: southern and coastal parts of Kismaayo district; and western parts of Afmadow district in Lower Juba region; northern parts of Cadale district in Middle Shabelle region; These conditions are indicative of reduced vegetation and low soil moisture, suggesting early stages of agricultural stress. Mild drought to normal conditions most other parts of are likely over most parts of the country including Awdal, Woqooyi Galbeed, Togdheer, Sanaag, Middle Juba, and Lower Shabelle regions.

### Weather Forecast for the Week Between 9 - 15 April 2025

#### Rainfall Forecast:

Based on NOAA-NCEP Global Forecasting System (GFS), light rains are expected in several areas in the country with chances of moderate intense rains over isolated areas in Afmadow (Lower Juba), Baydhaba (Bay), and Wanla Weyne (Lower Shabelle) regions. Most northern parts of Awdal region and coastal parts of Mudug, Nugaal and Bari will likely remain dry. Although the Madden Julian Oscillation (MJO) index is



Map 1: Drought conditions over Somalia as of 31 March 2025 based on Combined Drought Index (CDI)

currently within a region of influence ( phase 1/2), its present and forecast strength may not favor very heavy rains within the forecast period. Moderate rains cumulating to about 100 mm at the end of the forecast period are possible.

The temporal and spatial distribution of the forecast rainfall (Map 2) are as follows:

**Light cumulative rainfall of less than 50 mm** is forecast over several areas in the country including Togdheer, Sool, Sanaag, Galgaduud, Hiraan, Lower Shabelle, Bakool and Gedo regions; Borama district in Awdal region; Gebiley district, northern and southern parts of Hargeisa district in Woqooyi Galbeed region; Bossaso and Qandala districts and northern parts of Qardho district in Bari region; Burtinle district and southern parts of Garowe district in Nugaal region; Xaradheere and Galdogob districts, northern parts of Galkacyo district, western parts

of Hobyo district in Mudug region; Jowhar and Adan Yabaal districts in Middle Shabelle region; and Qansax Dheere and northern parts of Buur Hakaba district in Bay region. It is important to note that such light rains are also likely over the upper catchments of Juba River in Ethiopia.

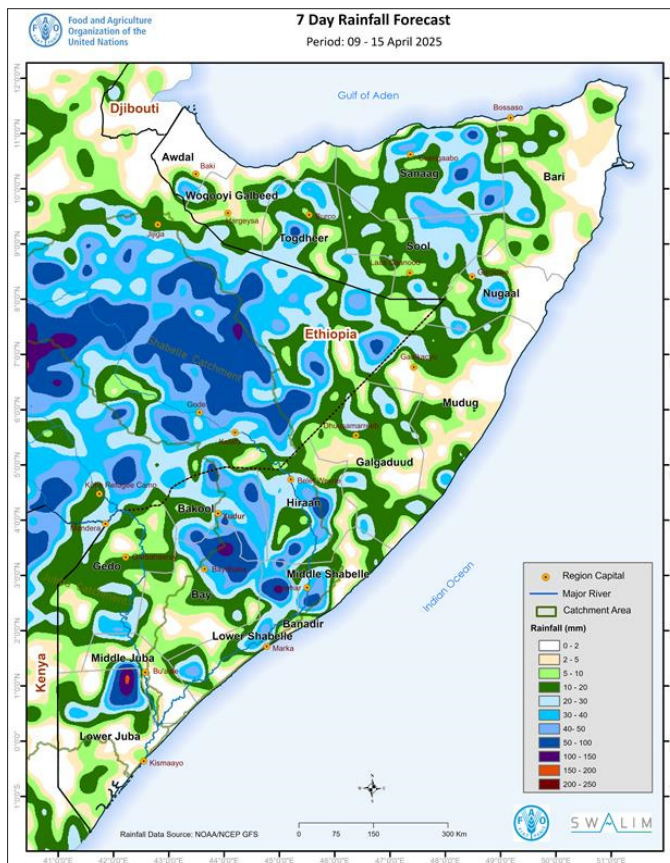
**Moderate cumulative rainfall of 50 mm** and more is likely over isolated areas in the northern parts of Afmadow district in Lower Juba region; northern parts of Baydhaba district in Bay region; central parts of Wanla Weyne district in Lower Shabelle region; Balcad district in Middle Shabelle region; northern parts of Ceel Barde district and northern parts of Tayeeglow district in Bakool region; Jalalaqsi district and central parts of Bulo Burte district in Hiraan region; northern and southern parts of Laasqoray district and eastern parts of Ceerigaabo district in Sanaag region; and central parts of Burco district in Togdheer region. Similar moderate rains will also be observed over most parts of the upper catchments of Shabelle River in Ethiopia. **The rains over isolated areas in the northern parts of Afmadow district in Lower Juba region; northern parts of Baydhaba district in Bay region; central parts of Wanla Weyne district in Lower Shabelle region may increase in intensity with up to more than 50 mm within the first 3 days** and summing up to more than 100 mm by the end of the forecast period.

**Dry conditions** are likely to prevail over most parts of Middle Juba region; Zeylac, and Lughaye districts and northern parts of Baki district in Awdal region; Berbera district, and northern parts of Gebiley district and central parts of Hargeisa district in Woqooyi Galbeed region; northern parts of Ceel Afweyn district in Sanaag region; Caluula, Iskushuban and Bandarbeyla districts and southern parts of Qardho district in Bari region; Eyl district in Nugaal region; Jariiban, Hobyo and Cadaado districts, and southern parts of Galkacyo district in Mudug region; eastern parts of both Ceel Buur district; eastern and western parts of Dhuusamarreeb district, and coastal parts of Ceel dheer district in Galgaduud region; Cadele district in Middle Shabelle region; Baraawe and Kurtunwaarey districts in Lower Shabelle region; northern parts of Dinsoor district and southern parts of Buur Hakaba district in Bay region; Luuq and Ceel Waaq districts in Gedo region; Jamaame district, eastern parts of both Afmadow and Badhaadhe districts and northern parts of Kismaayo district in Lower Juba region.

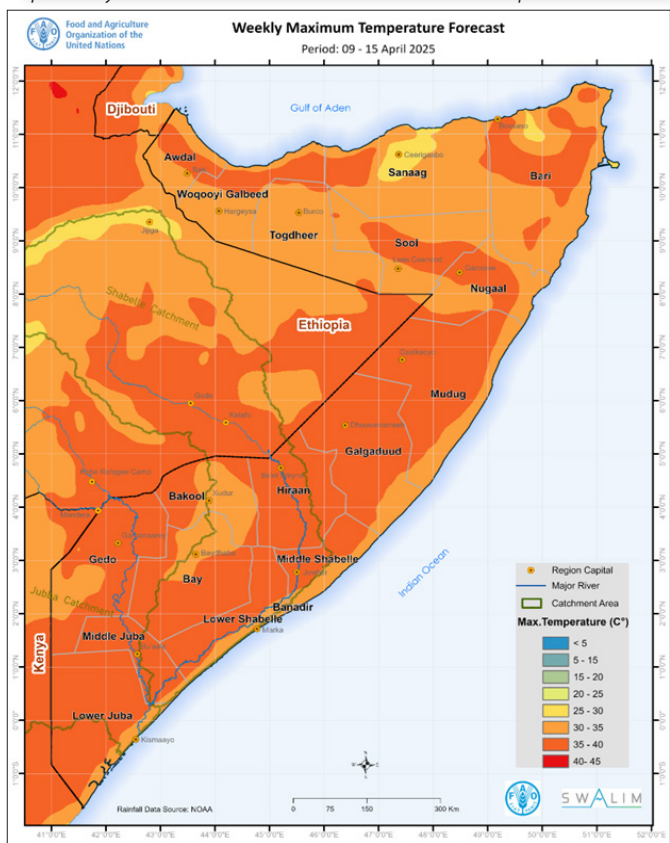
### Temperature Forecast:

Compared to last week, slightly mild maximum temperature (*Map 3*) is expected this week with notable coastal cooling influence during. Forecast minimum temperatures indicate the persistence of north-south varying thermal conditions across the country with a notable nocturnal coastal warming influence. The spatial variation of forecast temperature is as follows:

Based on **minimum temperature**, nighttime thermal conditions are likely to vary from between 15 °C and 20 °C over vast inland areas in the north to 25 °C and 30 °C in the south and central parts of the country. Nighttime temperatures of less than 20 °C are likely to be observed over most parts of Togdheer region, most inland parts of Sanaag region, Qardho district and inland parts of both Qandala and Caluula districts in Bari region; Borama district and southern parts of both Baki and Lughaye districts in Awdal region; Gebiley and Hargeisa districts in Woqooyi Galbeed region. Warmest nighttime conditions as a result of temperatures greater than 25 °C are likely over most parts of Lower Shabelle and Middle Shabelle regions; Doolow, Luuq and Garbahaarey districts and southern parts of Baardheere district in Gedo region; Jamaame district, western parts of Afmadow district and southern parts of Kimaayo district in Lower Juba region; Jilib district in Middle Juba



Map 2: Weekly cumulative rainfall forecast over Somalia from 9 - 15 April 2025



Map 3: Weekly maximum temperature forecast over Somalia from 9 - 15 April 2025

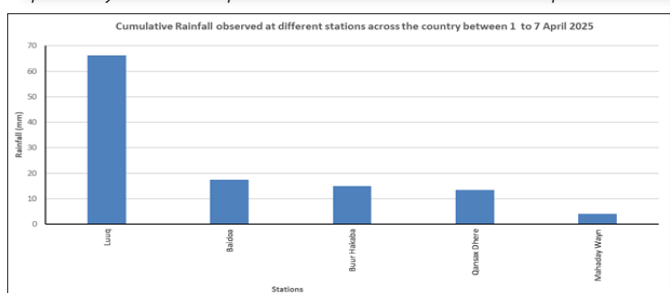


Figure 1: Stations that observed rainfall of more than 1 mm from 1 to 7 April 2025

region; Jalalaqsi district and central parts of both Belet Weyne and Bulo Burte districts in Hiraan region; Banadir region, Ceel Dheer and Ceel Buur districts in Galgaduud region; and Hobyo district in Mudug region. The rest of the country is likely to observe night time temperatures of between 20 °C and 25 °C.

**Moderately high daily maximum temperatures ranging from 35 °C to 40 °C** are expected over Hiraan region and inland areas of the following regions: Lower Juba, Middle Juba, Lower Shabelle, Middle Shabelle, Galgaduud, and Mudug. Such temperatures are also forecast over most areas in Gedo and Bay regions; Garowe district in Nugaal region; Iskushuban and Bossaso districts in Bari region; northern parts of Laas Canood district and southern parts of Xudun district in Sool region; northern parts of Ceel Afweyn district in Sanaag region; Berbera district and northern parts of Hargeisa district in Woqooyi Galbeed region; central parts of Lughaye district and northern parts of Baaki district in Awdal region.

### Current River Levels

The Shabelle River levels have risen sharply in a lagged response to runoff from the moderate rains observed two weeks ago particularly within its upper catchment in Ethiopia. According to measurements (3.27 m) taken today (9 April), the Shabelle River at Belet Weyne has risen by 1.52 m from last week's record and is now 49 cm above last year's level and 38 cm above LTM (*Graph 1*). Similarly rising patterns have been observed at both Bulo Burte and Jowhar. Today's height at Bulo Burte (2.40 m) represents a 60 cm rise above last week's level. An even sharper rise has been observed at Jowhar with today's record representing a 2.20 m rise above last week's value. This is likely to have been occasioned by moderate rains within the central catchments within the country.

The light rains in the upper catchment of Juba River only led to slight fluctuations in the levels at Dollow and Luuq. The height of Juba River at Dollow and Luuq today (2.28 m) represents a 20 cm rise above last week's value. At Luuq (*Graph 2*), today's level (2.38 m) represents just 2 cm rise compared to last week's value. Although it is very likely that the Juba River depicts similar behaviour downstream, the moderate rains over the catchment within the country is likely to lead to some significant rise in levels downstream at Bardheere and Buulle during the forecast period.

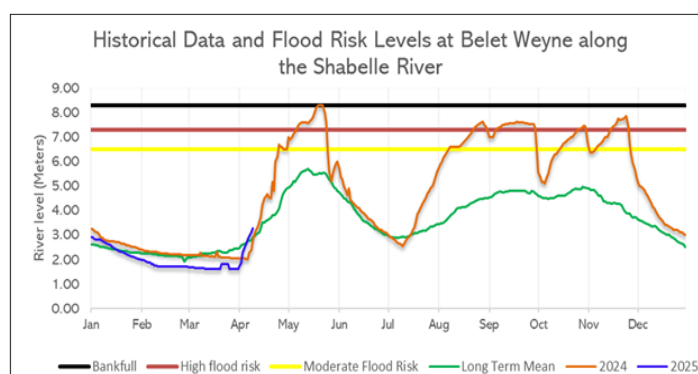
### Impacts Associated with the 9 - 15 April 2025 Weekly Forecast

Considering the lagged effect of previous rains, the moderate rains likely to be observed over most parts of the upper catchments in Ethiopia and some parts within the country, a significant rise in the levels of Shabelle River is likely but below the moderate flood risk levels. Along the Juba River, levels are likely to rise steadily in response to the light rains over its catchment.

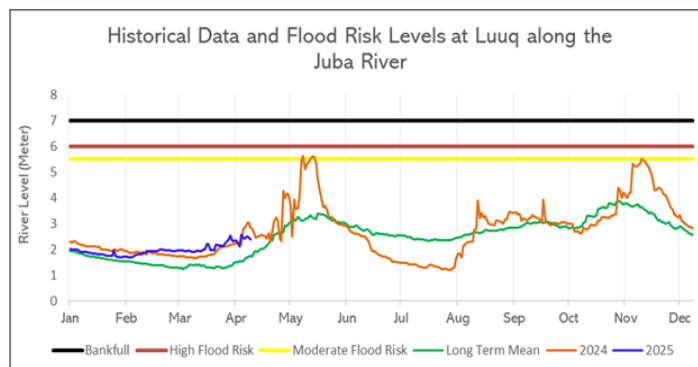
Isolated intense storms over northern parts of Afmadow district in Lower Juba region; northern parts of Baydhaba district in Bay region; central parts of Wanla Weyne district in Lower Shabelle region may lead to flash floods in vulnerable poorly drained areas within the first 3 days of the forecast period.

**High daily maximum temperatures ranging from 30 °C to 35 °C** are likely over most parts of Togdheer region; Ceerigaabo and Laasqoray districts in Sanaag region; Gebiley district and central and southern parts of Hargeisa district in Woqooyi Galbeed region; Borama district, southern parts of both Lughaye and Baki districts in Awdal region; Taleex district, southern parts of Laas Canood district and northern parts of Xudun district in Sool region; Bandarbeyla and Qardho districts in Bari region; Burtinle and Eyl districts in Nugaal region; Xudur district in Bakool region; Baydhaba district in Bay region; Ceel Waaq district in Gedo region. Similarly high daily maximum temperatures are also possible over the entire coastal strip around the country with marked incursions mainland over Banadir, Middle Shabelle, Galgaduud, and Bari regions.

Moderate daily maximum temperatures ranging from 25 °C to 30 °C are forecast over northern parts of Ceerigaabo district in Sanaag region and Qandala district in Bari region.



Graph 1: Shabelle River level at Belet Weyne Gauging Station as of 9 April 2025



Graph 2: Juba River level at Luuq Gauging Station as of 9 April 2025

The observed and forecast light to moderate rains is likely to alleviate the evolving mild to moderate drought conditions over the southern parts of the country. The conditions over these areas are not yet critical but could deteriorate quickly if the temporal distribution of the Gu rains are observed. The probable onset of Gu rains during the forecast period affirms the call for sustained provisions of land preparatory activities and inputs in time for early planting of fast-maturing crops and fodder planting to take advantage of the prevailing soil warmth and forecast moisture conditions. The severe drought over Puntland, particularly extreme over the central and southern parts of Mudug region, is likely to persist leading to further deterioration of vegetation health, water scarcity, and stressed livelihoods.

SWALIM is a multi-donor project managed by FAO and currently funded by The European Union, AICS, SDC, FCDO, Government of France and SIDA

