

SOMALIA WEEKLY WEATHER FORECAST

Valid From 9 to 15 June 2026

Forecast Highlight:

- Somalia has entered the Hagaa dry inter-season with the country likely to remain dry during the week from 9 to 15 June except for light rainfall forecast along the southern coastal margin (Lower Juba, Middle Juba, Lower Shabelle, Banadir); and Togdheer and Sanaag highland areas
- The current Shabelle upstream flow presents no flood risk at current levels but should be monitored as it propagates to Bulo Burte and Jowhar during the forecast period
- The May 2026 CDI confirms widespread Gu recovery across most of Somalia, but moderate-to-severe drought persists in central parts of Bay and coastal parts of both Bari and Sanaag
- High temperatures of above 35 °C are forecast across most parts; communities entering the Hagaa with residual drought face compounded heat, water stress, and livestock disease pressure

Review Summary:

- During 2–8 June 2026, rainfall was concentrated in northern Somaliland with isolated coastal showers in Lower Shabelle, confirming the weakening and cessation of Gu 2026 convective activity over most of Somalia
- Gu 2026 delivered above-normal cumulative rainfall over Somaliland and Jubaland, normal performance in central regions and below-normal performance in most parts of Puntland.
- A notable upstream pulse on the Shabelle River has been detected: Deefow rose by +1.56 m and Belet Weyne by +1.08 m to 4.58 m — well below the 6.50 m moderate flood level but the pulse is propagating downstream toward Bulo Burte and Jowhar
- Livelihood recovery lags behind meteorological improvement in many areas due to livestock disease, crop pests, conflict-related displacement, and residual drought in Bay and northeastern Bari

Observed Rainfall Conditions — Weekly Rainfall (2–8 June 2026)

Observed station rainfall during 2–8 June 2026 (**Figure 1**) was confined almost entirely to northern Somaliland, with isolated light totals in the southern coastal strip. The pattern reflects the transitional end of the Gu season, with minor coastal maritime moisture along the Indian Ocean and convective activity restricted to the northern highlands signaling the start of Karan rains.

The highest weekly total was at Allaybaday (Waqooyi Galbeed) with 64.0 mm over 3 rainy days, indicating sustained localised convection. Notable rains were also recorded at Wogooyi Galbeed particularly Taysa (30.0 mm, 2 days), Aburin (28.0 mm, 2 days), Malawle (27.0 mm, 1 day), and Dilla (17.5 mm). In Sanaag, Elafweyn recorded 45.0 mm in a single day — an intense but brief convective event.

In Togdheer, Sheikh recorded the most temporally distributed rainfall having received 31.5 mm over 4 rainy days — alongside

single-day totals at Fiqi Ayub and Xaaji Saalax (42.0 mm each). Awdal stations received moderate light rainfall at Xeeqo (36.0 mm) and Baki (20.0 mm). Ufayn (Bari) recorded 23.4 mm. In Sool, Shaxda recorded 36.5 mm and Las Anod 34.0 mm — both single-day events reflecting isolated convection over the highlands. Garowe (Nugaal) received 7.5 mm over 2 days.

Southern and central Somalia was generally dry with only Marka (Lower Shabelle) recording 18.7 mm over 2 days and Awdheegle observing 14.5 mm. Bu'aale (Lower Juba) received 2.0 mm whereas Afgooye recorded a trace of 0.8 mm. The interior of Galmudug, Mudug, Galgaduud, Bay, Bakool, Hiiraan, and Middle and Lower Juba was dry for the week.

Satellite rainfall observations corroborate the station data including moderate rainfall over the Ethiopian highlands, particularly in the Shabelle upper catchments — consistent with the upstream pulse now observed on the Shabelle River.

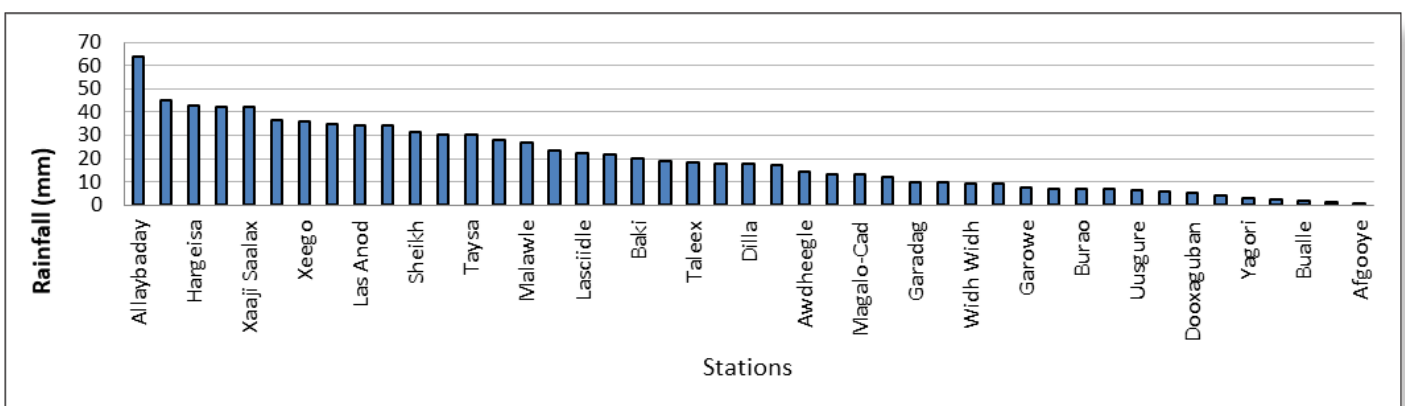


Figure 1: Observed weekly rainfall totals over Somalia during 2–8 June 2026, showing localised moderate Karan rainfall in northern Somaliland highlands

Observed River Levels

As of 9 June 2026, the hydrological situation is dominated by an emerging upstream pulse on the Shabelle River, while the Juba River remains in stable post-Gu low-flow conditions (**Table 1**). Both rivers are well below moderate flood-risk thresholds, but the Shabelle upstream signal warrants downstream monitoring given the short propagation lags involved.

On the Shabelle River, the upstream gauge at Deefow recorded a significant weekly rise of +1.56 m, from 1.93 m last week to 3.49 m this week. This magnitude of rise signals a new inflow entering Somalia from the Ethiopian Shabelle catchment, where rains have been observed as confirmed by the weekly satellite observations.

Downstream, Belet Weyne (**Figure 2**) rose by +1.08 m to 4.58 m, now standing 0.24 m above the long-term mean of 4.34 m and 1.58 m above the June 2025 level of 3.00 m. The rise at Beledweyne confirms that the previous peak flow at Deefow has already arrived at this station. At 4.58 m, Belet Weyne remains 1.92 m below the moderate flood level of 6.50 m, presenting no flood risk. For context, Belet Weyne reached a seasonal peak of 6.98 m (above flood level) in mid-May during the Gu peak, before receding sharply through late May and early June. The current rise represents a secondary pulse above the post-Gu recession, not a return to flood-season levels.

Bulo Burte declined by 0.48 m to 3.50 m, which is 0.17 m below LTM of 3.67 m and 0.50 m below last year's 4.00 m. Jowhar declined by 0.77 m to 3.08 m which is 0.77 m below LTM of 3.85 m. The falls at both stations confirm that the upstream Belet Weyne pulse has not yet arrived. At the levels currently observed at Belet Weyne (4.58 m), this pulse will not generate flood conditions at downstream stations.

On the Juba River, both stations are in stable with levels at Dollow having rose only by +0.12 m to 2.82 m which is essentially at its LTM of 2.88 m and 0.60 m above the June 2025 level of 2.22 m. Luuq (**Figure 3**) rose by only +0.04 m to 2.84 m, now 0.11 m above LTM of 2.73 m and 0.56 m above the 2025 level of 2.28 m.

Both stations remain very well below their moderate flood thresholds, with margins of 1.68 m at Dollow and 2.66 m at Luuq.

The marginal rises at both Juba stations likely reflect minimal runoff in the uppermost Ethiopian Juba catchment and are not operationally significant.

River	Station	Current (m)	Last Week (m)	Weekly Change	LTM (m)	vs LTM	2025 (m)	vs 2025	MFL (m)	vs MFL
Shabelle River										
Shabelle	Deefow	3.49	1.93	+1.56 ▲	N/A	N/A	N/A	N/A	N/A	N/A
	Belet Weyne	4.58	3.50	+1.08 ▲	4.34	+0.24	3.00	+1.58	6.50	-1.92
	Bulo Burte	3.50	3.98	-0.48 ▼	3.67	-0.17	4.00	-0.50	6.50	-3.00
	Jowhar	3.08	3.85	-0.77 ▼	3.85	-0.77	3.15	-0.07	5.00	-1.92
Juba River										
Juba	Dollow	2.82	2.70	+0.12 ▲	2.88	-0.06	2.22	+0.60	4.50	-1.68
	Luuq	2.84	2.80	+0.04 ▲	2.73	+0.11	2.28	+0.56	5.50	-2.66

Table 1: River level status along the Juba and Shabelle rivers as of 9 June 2026, showing current levels, weekly change, comparison with long-term mean and 2025 levels, and proximity to moderate flood thresholds. MFL = Moderate Flood Level. N/A = thresholds or historical values not yet established for Deefow

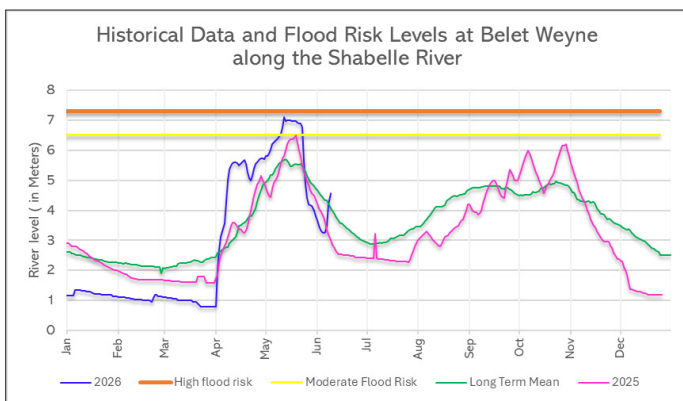


Figure 2: Current levels along the Shabelle River at Belet Weyne compared to long-term mean, 2025 levels and moderate flood-risk threshold as of 9 June 2026, showing a weekly rise of +1.08 m above the LTM within the context of the post-Gu seasonal recession

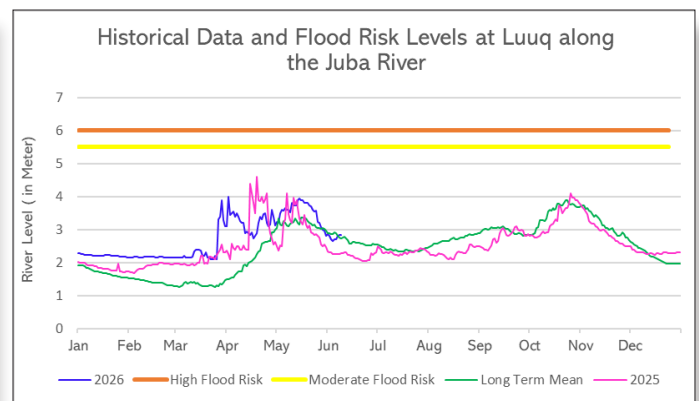


Figure 3: Current levels along the Juba River at Luuq compared to long-term mean, 2025 levels and moderate flood-risk threshold as of 9 June 2026, showing stable near-normal low-flow conditions with no flood risk

Drought Evolution and Experienced Impacts

The May 2026 Combined Drought Index (CDI) map (Figure 4) confirms significant and widespread improvement in drought conditions across most of Somalia during the Gu 2026 season. Large areas of the country can now be classified as Mild to Normal (CDI 0.8 – 1.0+), representing a marked recovery from the severe multi-year drought that prevailed through 2023–2025.

The most significant recovery is evident across Somaliland (Woqooyi Galbeed, Awdal, Togdheer and inland parts of Sanaag), and most parts of Hiraaan, Middle Shabelle, Gedo, Middel Juba and inland parts of Lower Juba. These areas align closely with stations that recorded above-normal cumulative Gu rainfall, and Radio Ergo community feedback corroborates the CDI — confirming water source replenishment, pasture recovery, and improving livestock body condition in these zones. However, residual drought pockets remain with moderate drought (CDI < 0.8) present in isolated pockets in Bay, Bakool, Lower Juba, Mudug, Nugaal and Sool regions. Severe drought (CDI < 0.6) persists in northeastern coastal belt of Bari and Sanaag.

These residual drought areas are entering the Hagaa dry inter-season without adequate Gu recovery. With the cessation of seasonal rainfall, meteorological drought in these zones is unlikely to improve before the Deyr onset in October. Hydrological drought — including sub-surface water reserves and river base flows, and livelihood recovery will take longer to respond.

Experienced Impacts (Radio Ergo Feedback)

Radio Ergo listener feedback during 28 May–3 June 2026 provides extensive ground-level confirmation of Gu recovery across multiple regions, while simultaneously revealing critical pockets of continued drought and humanitarian concerns.

Rainfall Recovery

The most widely reported theme was beneficial rainfall and resource recovery. Callers from across Somaliland — including Sanaag (Erigavo, Bir-hamar, Qarar), Sahil, Togdheer (Bali'ad, Beer), and Woqooyi Galbeed (Hargeisa/Toon) — reported replenished water sources, recovering livestock, and general well-being.

In Galmudug, callers from Adado, Dhusamareb, Abudwak, and Guriel reported good rainfall and livestock recovery. Hiraaan callers reported beneficial rainfall, with one caller from Jalalaqsi noting that farmers had returned to their fields following flood recovery.

Callers from Middle Shabelle (Jarirow, Jowhar, Barawe), Bay (Baidoa), Gedo (Dollow, Bardera, Beledhawo), and Lower Juba (Kismayo, Afmadow, Dhobley, Robow) reported good rainfall benefiting crops and livestock. These accounts are consistent with the CDI Mild to Normal classification over these regions.

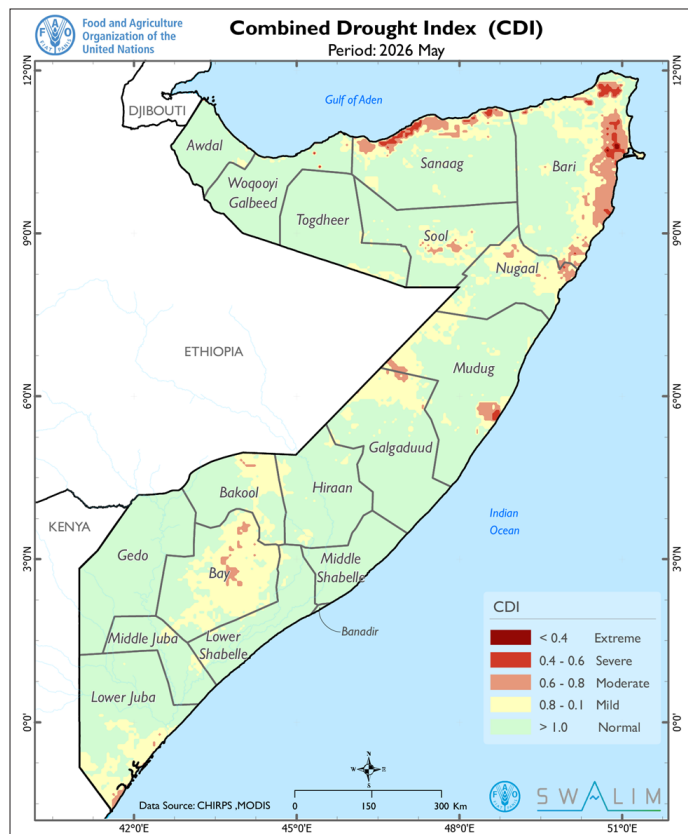


Figure 4: Combined Drought Index (CDI) for Somalia, May 2026, showing widespread Mild to Normal conditions across most of Somalia following the Gu 2026 season, with residual moderate-to-severe drought pockets in inland Bay, northeastern coastal of Bari and Sanaag

Residual Drought and Heat

Distinct drought and heat pockets were also clearly communicated. Female callers from Abudwak and Guriel (Galgaduud) reported that the rainy season had been short-lived and temperatures had turned hot. A caller from Baidoa (Bay) reported continuing drought and intense heat. A caller from Bardera (Gedo) noted the absence of recent rainfall. A Bay region caller specifically asked climate experts to explain why drought and water shortage persisted despite the rainy season — a question that points directly to the spatially heterogeneous nature of the Gu recovery and the severe-to-extreme CDI conditions within Bay. These community accounts validate the CDI at the local level.

Food Security and Livelihood Recovery Lag

A caller from Robow (Lower Juba) captured the critical gap between meteorological and livelihood recovery: despite having received rainfall, their cattle had already been lost to the previous drought. A Jowhar farmer reported that maize crops had yellowed and received insufficient rain. Jowhar porters reported unemployment. These accounts confirm that even in areas now classified as near-normal on the CDI, household food security, asset recovery, and income levels lag significantly behind meteorological indicators — a pattern that will be amplified as the Hagaa dry season constrains livelihood options further.

Humanitarian and Conflict Concerns

A caller from Beledhawo (Gedo) sought information on malnutrition treatment access. Ongoing conflict was reported from Guriel (Galmudug), Mahaday (Middle Shabelle — Al-Shabaab and government clashes), and Baidoa (Bay — conflict-driven displacement in late May, though a later caller reported conflict had ceased and farming resumed by early June). These concerns compound the already difficult conditions in residual drought and heat-affected areas.

Post-Gu Hazards

Mosquito infestations were reported in Gedo (Beledhawo) and Puntland, raising vector-borne disease risk in the post-Gu wet phase. Widespread crop pest pressure was reported in Bari (caterpillars), Hiraan (nocturnal pests), Galmudug (crop yellowing), Middle Shabelle (pest management with soap solutions), South Central (aphids on sesame), Somaliland (watermelons and vegetables), and Dollow (onions). Livestock disease — including mouth sores (Togdheer), respiratory coughing (Galkayo, Kismayo, Bardera), and CCPP in Ethiopia’s Somali Region — signals that veterinary support needs remain acute despite the end of the Gu season. Deforestation for charcoal production was flagged in Bakool.

Rainfall Forecast (9–15 June 2026)

The NOAA GFS 7-day rainfall forecast for 9–15 June 2026 (Figure 5) indicates predominantly dry conditions across most of Somalia during the coming week, consistent with the onset of the Hagaa dry inter-season. Dry conditions will dominate across central Somalia, including Galmudug, Mudug, Galgaduud, most of Hiraan, Bakool, and the interior of Bay, Gedo, Middle Juba, and Lower Juba.

Light rains of less than 50 mm are likely over central parts of Togdhee and Sanaag and the southern coastal strip — including Lower Juba, Middle Juba coastal margins, Lower Shabelle, and Banadir. The light rainfall of less than 30 mm may occur from Indian Ocean maritime moisture convergence.

Dry conditions are expected to prevail across most other parts of the country.

Dry conditions are also likely over the nearby catchments of both Juba and Shabelle Rivers — in Ethiopia adjacent to the Somalia border and within Somalia itself. Over the uppermost Ethiopian catchments, light rainfall of less than 50 mm is forecast. These amounts are however insufficient to generate meaningful river recharge within Somalia within the forecast period.

Temperature Forecast (9–15 June 2026)

Maximum Temperature

Maximum temperatures during 9–15 June 2026 are expected to remain high across most parts of Somalia. The expected spatial variation of maximum temperature is shown in Figure 6 and summarized below.

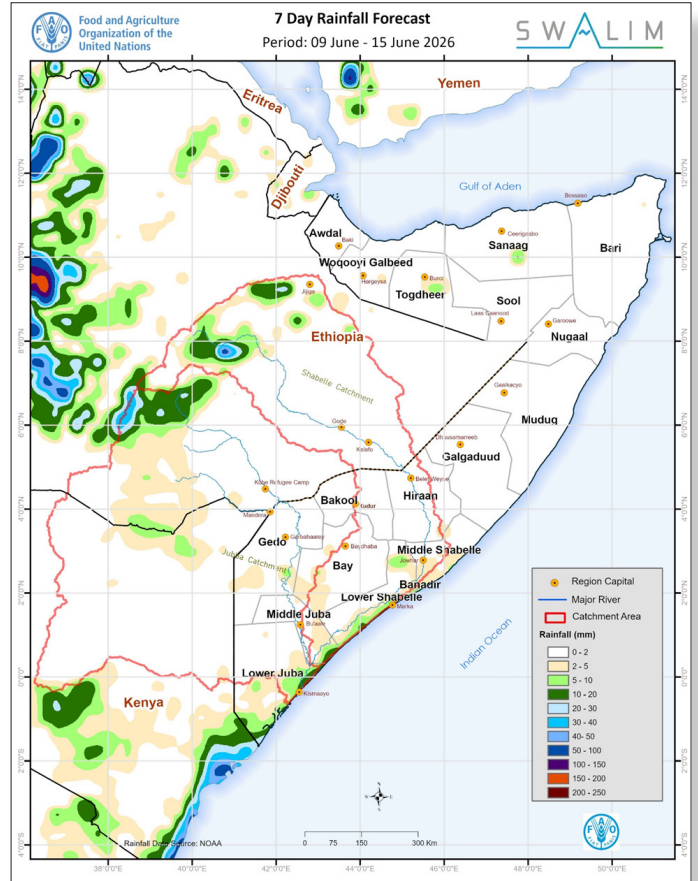


Figure 5: Seven-day rainfall forecast for Somalia and surrounding catchments for 9–15 June 2026 depicting dry conditions across most of the country with light rainfall possible over Togdheer and Sanaag highlands and along the southern Indian Ocean coastal strip

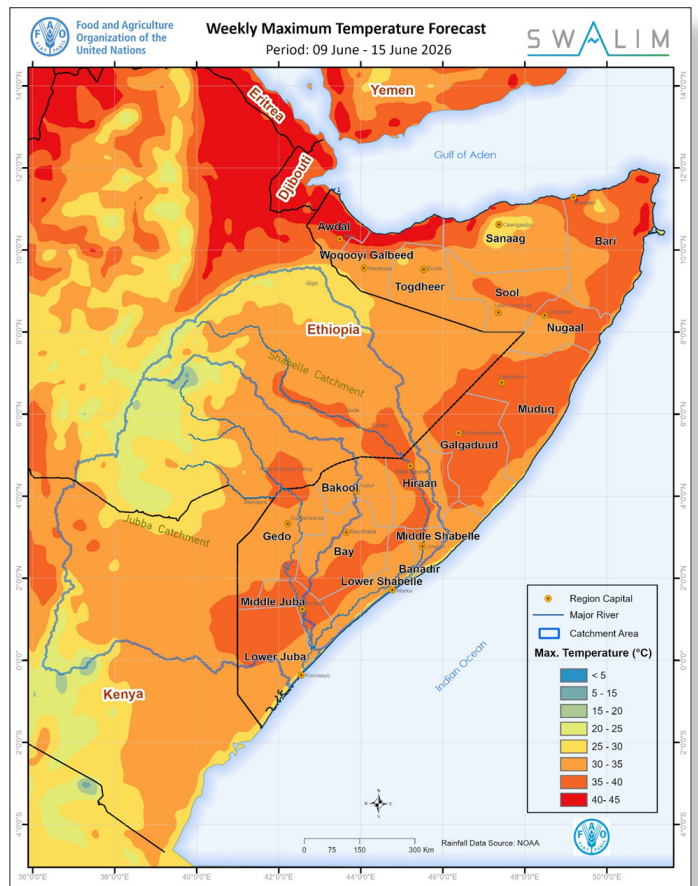


Figure 6: Forecast maximum temperatures over Somalia for 9–15 June 2026 showing widespread moderately high to high temperatures (30 – 40°C) across the country, with very high temperatures above 40°C along northern hot belts in Awdal, Wogoyi Galbeed, and northeastern Bari

- **Very high daily maximum temperatures above 40°C** are forecast over Iskushuban district in Bari region; Berbera district in Waqooyi Galbeed region; and Zeylac and Lughaye districts and the northern half of Baki district in Awdal region. These are hot lowland and coastal areas where Hagaa onset brings extreme radiative heating and where marine moderation is insufficient to reduce peak daytime temperatures below 40°C.
- **Moderately high maximum temperatures of 35°C to 40°C** are expected over: inland parts of Mudug; inland parts of Galgaduud; Garowe and Eyl districts in Nugaal; Bandarbeyla, Caluula and Bosasso districts in Bari; El Afweyn district in Sanaag; central parts of Sool; northern parts of Borama district in Awdal; Saakow and Bu'aale districts in Middle Juba; Afmadow district in Lower Juba; central parts of Hiiraan; Wanla Weyne district in Lower Shabelle; Buur Hakaba district in Bay; and Dollow district in Gedo.
- **High maximum temperatures of 30°C to 35°C** are likely over the northern Somaliland highland belt including most of Togdheer and much of Sanaag (except El Afweyn), interior Sool, Nugaal valley areas, Bari coastal districts, most of Bay (except Buur Hakaba), all of Bakool, most of Gedo (except Dollow), most of Hiiraan (excluding the central hot zone), most of Lower and Middle Shabelle (except Wanla Weyne), Banadir, most of Lower Juba (except Afmadow), most of Middle Juba (except Saakow and Bu'aale), and the majority of Wogooyi Galbeed and Awdal districts excluding those with very high temperatures noted above.
- **Moderate maximum temperatures of 25°C to 30°C** are limited to the highest highland elevations in Wogooyi Galbeed, Togdheer and Sanaag, where orographic cooling moderates peak temperatures.

Maximum Temperature

Minimum temperatures are expected to remain moderately warm across most parts of the country, with relatively warmer night-time conditions likely over the Indian Ocean coastal strip. The expected spatial variation in minimum temperature is shown in Figure 7 and summarized below.

- **High minimum temperatures of 25°C to 30°C** are likely along southern coastal districts, including the Banadir coast, Lower Shabelle coastal areas (Marka, Baraawe), and the Lower Juba coastal strip including Kismayo district. Warm sea surface temperatures elevate night-time lows in these coastal zones, limiting recovery from daytime heat and contributing to elevated humidity and vector-borne disease risk. This is also likely to intensify cumulative heat stress on people and livestock particularly in coastal and lowland areas already facing water stress.
- **Moderately high minimum temperatures of 20°C to 25°C** are expected across the broad interior of Somalia, covering Bay, Bakool, Gedo interior, Middle Juba, inland Hiraan, Galgaduud, inland Mudug, Nugaal, inland Bari, and most of the Somaliland interior. This is the dominant nighttime temperature regime across the country during Hagaa.

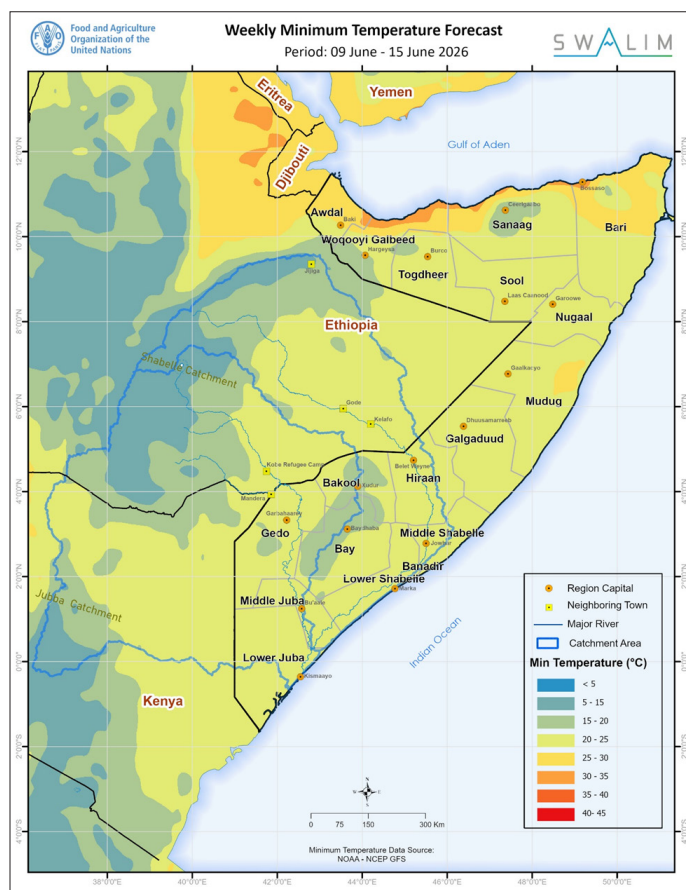


Figure 7: Forecast minimum temperatures over Somalia for 9–15 June 2026 (NOAA NCEP GFS), showing moderately warm nights of 20–25°C over most of the interior, warmer coastal conditions of 25–30°C along the Indian Ocean coast, and cooler highland conditions of 15–20°C in northern Somaliland

These temperature conditions will accelerate evapotranspiration, increase soil moisture loss, intensify livestock water demand, and raise the risk of heat stress in humans and animals — particularly in residual drought areas where surface water availability is already declining as the Hagaa begins.

- **Moderate minimum temperatures of 15°C to 20°C** are indicated over the highland interiors of Sanaag and Togdheer. These cooler nights offer modest relief from daytime heat stress at higher elevations.

Impacts Associated with the Weekly Weather Forecast

- **Drought and Water Stress:** Predominantly dry conditions during 9–15 June mean that areas with poor Gu 2026 performance — inland Bay, Garowe district (Nugaal), the Bulo Burte (Hiraan), and northeastern Bari — will receive no rainfall relief as Hagaa begins. For communities where the CDI already shows severe drought, the dry inter-season will further intensify water scarcity, reduce pasture quality, and increase livestock distress. Berkads and hafirs filled during the Gu season will be the primary water source for the coming months, and their management is operationally critical. Humanitarian water trucking requirements are expected to increase in residual drought zones through June–August.
- **Water and Pasture:** In areas with good Gu 2026 rainfall — most of Somaliland and Jubaland — pasture quality is currently at its seasonal peak. However, with Hagaa onset, vegetation will progressively dry and degrade over June–August. Light forecast rainfall in Togdheer and Sanaag

highlands may extend the usable pasture window in those areas for an additional few weeks. Southern coastal rains, while light, may maintain short-term soil moisture for pastoralists in coastal Lower Juba and Lower Shabelle. Pastoralists in Somaliland with well-stocked water sources following good Gu performance are relatively well placed for the inter-season.

- **Flood Risk:** No significant flood risk is anticipated during 9–15 June forecast period. The Shabelle upstream peak flow at Deefow (+1.56 m) and Belet Weyne (+1.08 m, currently 4.58 m) will propagate to Bulo Burte and Jowhar during the forecast period, but at levels well below flood thresholds. Communities and partners along the Shabelle corridor between Belet Weyne and Jowhar should nonetheless remain attentive to weekly river level updates. Ethiopian catchment rainfall can be rapid and unpredictable during residual post-Gu convection events, and any new upstream pulse above current levels could accelerate the downstream arrival. The Juba River presents no flood concern.
- **Heat Stress:** High daytime temperatures of 35–40°C across most of the country, combined with moderately warm nights of 20–25°C in the interior and 25–30°C on the coast, will create sustained heat stress as Hagaa begins. Livestock in areas with limited water availability face increased mortality risk.

Human heat exhaustion risk is elevated in the northern coastal hot belts (Iskushuban, Berbera, Zeylac, Lughaye) where temperatures may exceed 40°C. Evapotranspiration demand will deplete surface water sources faster than expected in communities planning on Gu-replenished water availability, particularly in lowland areas.

- **Agriculture and Livelihoods:** Farmers who benefited from Gu 2026 should prioritize completing outstanding harvest operations in Bay (maize, sorghum), Gedo (onions, vegetables), Lower Juba (sesame), and Middle Shabelle before residual soil moisture is fully depleted. Post-harvest storage and crop protection from pests and rodents are critical given the widespread pest pressure reported in Radio Ergo feedback across Bari, Hiiraan, Middle Shabelle, and South Central. In riverine agricultural areas in Hiiraan and Middle Shabelle, the Shabelle pulse may provide marginal irrigation support for off-season cultivation if managed appropriately. Veterinary support should be mobilized urgently to address the CCPP, respiratory disease, and oral disease outbreaks reported across Togdheer, Galkayo, Kismayo, Bardera, and Ethiopia’s Somali Region.

Key Operational Message

Somalia has entered the Hagaa dry inter-season with mixed Gu performance. Gu 2026 rains were broadly above-normal over Somaliland and Jubaland and normal to below normal over central regions and below-normal in most parts of Puntland. Drought recovery remains fragile and incomplete in inland parts of Bay, central regions and coastal parts of Bari and Sanaag. The next two to three months require sustained focus on water system management, livestock health support, crop protection, and early warning monitoring in residual drought zones — against a background of compounding heat stress, widespread crop and livestock disease, and conflict-related access constraints in parts of the country.

SWALIM is a multi-donor project managed by FAO and currently funded by The European Union, UKaid, SDC, GCF, The World Bank, Canada and Government of Sweden

