

## SOMALIA WEEKLY WEATHER FORECAST

Valid From 15 - 21 April 2025

### Review Summary:

- The second week of April marked the onset of Gu rains in southern parts of the country
- Widespread light rains were generally observed in Somalia with moderate intensities in the northern parts of the country
- A steady rise was observed along the Shabelle River as a result of light to moderate rains over the central catchments within the country
- A sharp rise in the level of the Juba River has been reported as a result of rains at Doolow and Luuq

### Forecast Highlight:

- Moderate to heavy rains are expected over Bay and Bakool regions and parts of Hiraan region with chances of flash floods in vulnerable areas
- Light rains are likely over the rest of the country except over most parts of Puntland and Awdal region where dry conditions are likely to prevail
- Although the performance of Gu rains has a weak connection with El Niño Southern Oscillation (ENSO), the weakening of La Niña during March and April seems to have favored normal rains at the start of the season.
- Regional factors and intraseasonal atmospheric influences are likely to be favoring this increased rainfall in the region

### Weather Review

In the last one-week (8 - 14 April 2025), widespread light rains were generally observed in Somalia with moderate intensities in the northern parts of the country. Moderate rains above 50 mm were observed in the following stations: Uusgure (87.5 mm) and Qardho (65.0 mm) in Bari region, Galkacayo (72.0 mm) in Mudug region, Lascanod (60.0 mm) in Togdheer region and Dollow (54.8 mm) in Gedo region. Light rains of below 50 mm was observed in the following stations: Baki (49.0 mm), Dhahar (38mm) in Sanaag region; Magaalo Cad (3.0 mm) and Qulujeed (3.0 mm) in Awdal region; Buur Hakaba (48 mm) in Bay region; Balcad (40.5 mm) in Middle Shabelle region; Buloburte (37.5 mm), Mataban (35.0 mm), Mahas (27.8 mm) and Beledweyne (5.5 mm) in Hiraan region; Baydhaba (37.3 mm) and Qansax-dhere (36.9 mm) in Bay region; Bardhere (35.0 mm) in Gedo region, Ballidhig (32.0 mm), Xudun (29.6 mm), Oodweyne (20.0 mm), Widhwidh (18.4 mm) and Buhoodle (4.2 mm) in Togdheer region; Buran (28.0 mm), Badhan

(12.0 mm) and Baran (2.4 mm) in Sanaag region; Garowe (25.3 mm), Xasbahale (16.0 mm) and Burtinle (8.2 mm) in Nugaal region; Caynabo (25.0 mm) and Taleeh (5.3 mm) in Sool region; Gumburaha (24.0 mm), Aburin (23.3 mm), Balligubadle (12.0 mm) and Gebilley (5.0 mm) in Woqooyi Galbeed region; Kismayo (23.5 mm) in Lower Juba region; Ufayn (37.9 mm), Carmo (15.0 mm), Murcaanyo (12.0 mm), Dangoroyo (10.6 mm), Balli Dhidin (8.4 mm) and Iskushuban (3.0 mm) in Bari region; Buaalle (7 mm) in Middle Juba region; and Jariiban (5.0 mm) in Mudug region.

A steady rise was observed along the Shabelle River as a result of light to moderate rains over the central catchments within the country with some rain water accumulation reported at Mataban. A sharp rise in the level of the Juba River has been reported as a result of rains at Doolow, Luuq and adjacent areas.

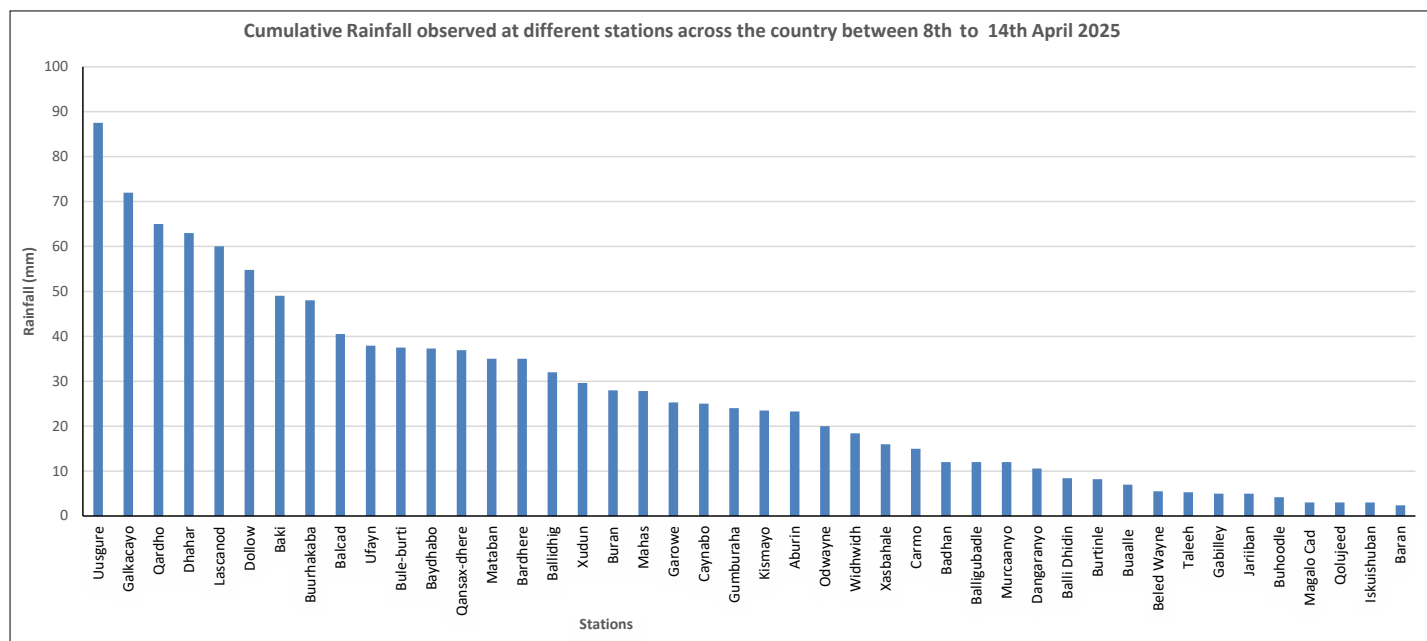


Figure 1: Cumulative rainfall observed at different stations across the country from 8 to 14 April 2025

## Weather Forecast for the Week Between 9 - 15 April 2025

### Rainfall Forecast:

According to the NOAA-NCEP Global Forecasting System (GFS) forecast, moderate to heavy rains are expected over Bay and Bakool regions and parts of Hiraan region. Light rains are likely over the rest of the country except over most parts of Puntland and Awdal region where dry conditions are likely to prevail. Although the current and forecast position of Madden Julian Oscillation (MJO) index is outside the region of influence, the rains over Bay and Bakool may cumulate to more than 150 mm by the end of the forecast period. Other regional factors and intraseasonal atmospheric influences are likely to be favoring this increased onshore moisture transports and rainfall in the region. Although the performance of Gu rains has a weak connection with El nino southern Oscillation (ENSO), the weakening of La Niña during March and April seems to have favored moderate rains at the start of the season.

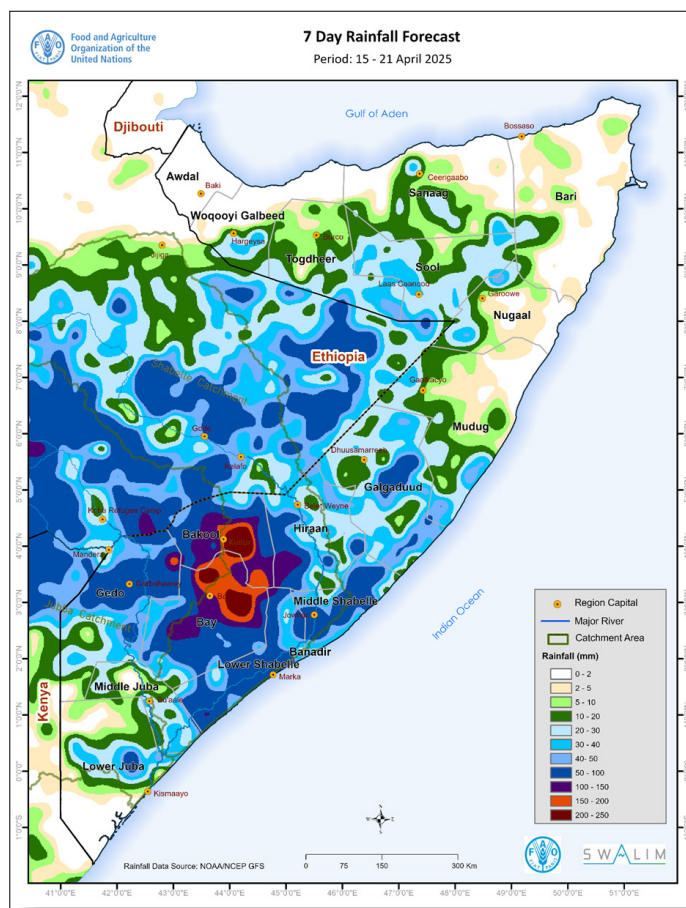
The temporal and spatial distribution of the forecast rainfall (Map 1) are as follows:

**Very heavy cumulative rainfall of over 150 mm** is likely to be observed over some northern parts of Baydhaba district in Bay region; Xudur district and southern parts of Tayeeglow district in Bakool region. There is a chance that the rains over these areas may exceed 200 mm by the end of the forecast period. Daily forecasts suggest that much of these rains may be observed on the 18 and 19 April with likelihood of flash flooding over prone areas.

**Heavy cumulative rainfall of over 100 mm** is likely to be observed over most parts of Baydhaba district and northern parts of Buur Hakaba district in Bay region; eastern parts of Luuq district in Gedo region; Waajid, Xudur and Tayeeglow districts in Bakool region; western parts of Bulo Burte district in Hiraan region.

**Moderate cumulative rainfall of 50 mm to 100 mm** is likely to occur over most parts of Bay region particularly Buur Hakaba district; most parts of Bakool region including Rab Dhuure and Ceel Barde districts; and most parts of Lower Shabelle region particularly Marka and Baraawe districts, southern parts of Sablaale district, and western parts of both Wanla Weyn and Afgooye districts; Luuq, Belet Xaawo and Garbahaarey districts, northern parts of both Ceel Waaq and Baardheere districts; south-eastern parts of Afmadow district; western parts of both Belet Weyne districts in Hiraan region; Middle Shabelle region particularly Cadale district, central parts of Jowhar, and inland parts of Balcad district; areas at the border of Ceel Buur and Dhuusamarreeb districts in Galgaduud region. It is important to note that similar moderate rains will also be observed over several parts of both Shabelle and Juba River catchments within the country and in Ethiopia.

**Light cumulative rainfall of less than 50 mm** is forecast over several areas in the country including most parts of Togdheer, Sool, Galgaduud, Middle Juba and Banadir regions; southern parts of Hargeisa district in Woqooyi Galbeed region; Ceerigaabo district in Sanaag region; some isolated parts in the western parts of Qardho district in Bari region; northern parts of Garoowe district and western parts of Burtinle District in Nugaal region; Gaalkacyo, Galdogob and Xarardheere districts and southern parts of Hobyo district in Mudug region; Jalalaqsi district and northern parts of both Belet Weyne and Bulo Burte districts in Hiraan region; northern parts of both Jowhar and



Map 1: Weekly cumulative rainfall forecast over Somalia from 15 - 21 April 2025

Adan Yabaal districts and coastal parts of both Balcad and Adan Yabaal districts in Middle Shabelle region; eastern parts of both Wanla Weyn and Afgooye districts in Lower Shabelle region; western parts of Qansax Dheere district and southern parts of Dinsoor district in Bay region; Doolow district and southern parts of Baardheere district in Gedo region; Jamaame district, northern parts of Kismaayo district and southern parts of Afmadow district in Lower Juba region.

**Dry conditions** are likely to prevail over most parts Awdal and Bari regions; most parts of Lower Juba region particularly Badhaadhe district; Jariiban district in Mudug region, most parts of Nugaal region particularly Eyl district and eastern parts of Garoowe districts; some parts of Sanaag region particularly Ceel Afweyn district, northern parts of Laasqoray district and the coastal parts of Ceerigaabo district; and most parts of Woqooyi Galbeed region particularly Berbera and Gebiley districts and northern parts of Hargeisa district.

### Rainfall and temperature classification

- Dry conditions = 0 mm rainfall
- Light rain = 0 to 50 mm
- Moderate rain = 50 to 100 mm
- Heavy rain = 100 to 150 mm
- Very Heavy rain = more than 150 mm
- Low temperatures = Below 25 °C
- Moderate temperatures = 25 °C to 30 °C
- Moderately high temperatures = 30 °C to 35 °C
- High temperatures ranging from 35 °C to 40 °C
- Very high Temperature = More than 40 35 °C

## Temperature Forecast:

Compared to last week, slightly mild maximum temperature (*Map 2*) is expected this week over Puntland with notable coastal cooling influence over Lower Juba and Middle Juba regions. Although there is persistent north-south varying thermal conditions across the country, some isolated low minimum temperature is forecast over Bay-Bakool border areas and nocturnal coastal warming with marked influence stretching far inland over Galgaduud and Mudug regions. The spatial variation of forecast temperature is as follows:

Based on **minimum temperature**, coolest night time thermal conditions (15 °C and 20 °C) are likely over inland areas in Ceerigaabo, Laasqoray and Qandala districts in the north and areas in the border between Xudur district in Bakool region and Baydhaba district in Bay region. The warmest night time thermal conditions (25 °C and 30 °C) are likely to over most areas in Galgaduud and Mudug regions; some parts of Afmadow district in Lower Juba region; some central; parts of Saakow district in Middle Juba region, Belet Weyne town in Hiraan region; and narrow southern and northern coastal strip. The rest of the country is likely to experience moderate night time thermal conditions ranging from 20 °C and 25 °C.

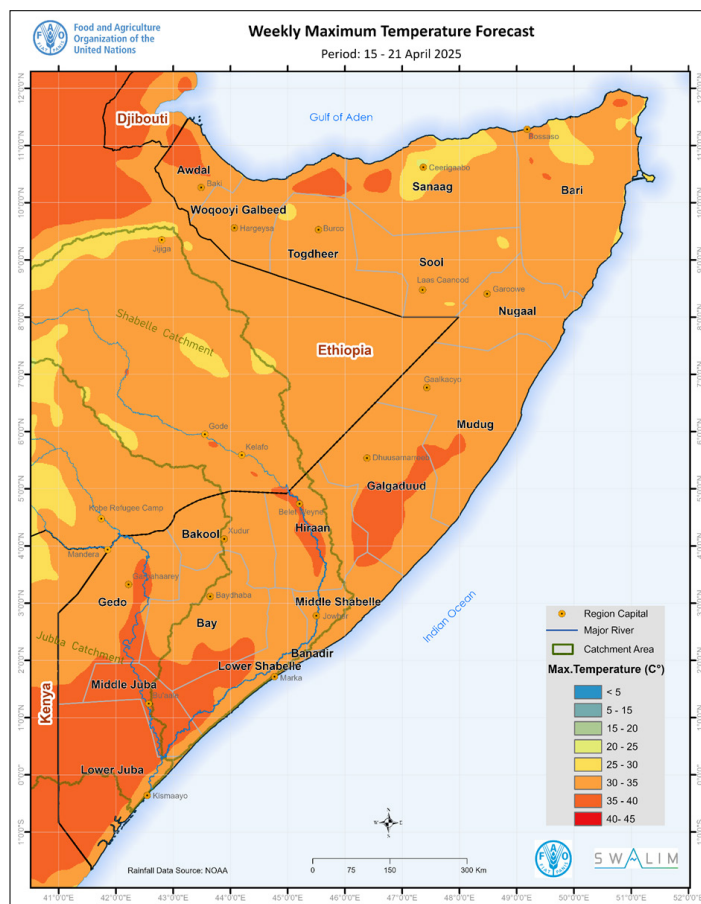
**High daily maximum temperatures ranging from 35 °C to 40 °C** are expected over Badhaadhe, Kismaayo and Afmadow districts in Lower Juba region; Saakow and Bu'aale districts in Middle Juba Region; Dinsoor district and southern parts of Buur Hakaba district in Bay region; Sablaale district and northern parts of Kurtunwarey district in Lower Shabelle region; southern and northeastern parts of Baardhere district and central parts of Garbahaarey district in Gedo region; central parts of both Bulo Burte and Belet Weyne districts in Hiraan region; Ceel Buur district and western parts of Ceel Dheer district in Galgaduud region; western parts of Hobyo district in Mudug region; Zeylac district in Awdal region; eastern parts of Berbera district in Woqooyi Galbeed region; and northern parts of Ceel Afweyn district in Sanaag region.

**Moderately high daily maximum temperatures ranging from 30 °C to 35 °C** are likely over most parts Awdal, Woqooyi Galbeed, Togdheer, Sool, Nugaal, Mudug, Bay, Bakool, Middle Shabelle

## Current River Levels

Along the Shabelle River, there is a steady increase at Belet Weyne (*Graph 1*) with today's level (3.38 m) representing 11 cm rise above last week's level (3.27 m). The current level is above the LTM (Long Term Mean) level (3.28m) and below the 2024 level (3.75m) of the same week. At both Bulo Burte and Jowhar stations similar steady river level increase have been observed. Today's reading at Bulo Burte (2.80 m) represents a 40 cm increase from last week's level. This steady rise in the river levels has been driven by local run off occasioned by light to moderate rains over the central catchments within the country.

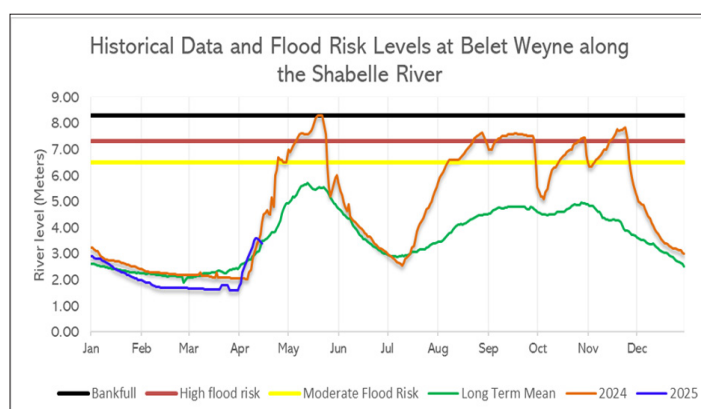
A sharp rise in the level of Juba River at Luuq (*Graph 2*) has been reported with today's level (4.40m) 2.12 m above last week's level, 2.38 m above the LTM (2.02m) and 1.84 m above the 2024 level (2.56m) of the same week. Today's level at Doolow (2.94 m) represents 66 cm above last week's value (2.28). These rise in river levels has been occasioned by rains received at Doolow and Luuq.



Map 3: Weekly maximum temperature forecast over Somalia from 15 - 21 April 2025

and Banadir regions; some parts of Sanaag region particularly Laasqoray district and southern parts of both Ceerigaabo and Ceel Afweyn districts; most part of Bari region particularly Bossaso, Qardho, Bandarbeyla, Iskushuban and Caluula districts; most parts of Gedo region including Doolow, Luuq, and Belet Xaawo districts.

Moderate daily maximum temperatures ranging from 25 °C to 30 °C are forecast over northern parts of Ceerigaabo district in Sanaag region, Qandala district in Bari region and isolated northern areas in Oodweyne district in Togdheer region.



Graph 1: Shabelle River level at Belet Weyne Gauging Station as of 15 April 2025

It is expected that the river flow downstream will lead to river level rise at Bardheere within 2 days and at Bualle by the end of the forecast week. **Unfortunately there are still no river gauges at both of these locations, due to 2023 El Niño floods.**

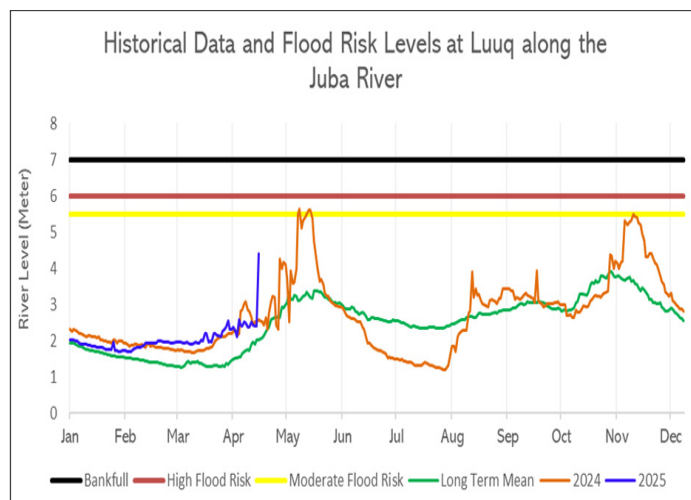


## Impacts Associated with the 16 - 22 April 2025 Weekly Forecast

Considering the lagged effect of previous rains in the upper catchments and this past week's rains over the central catchment, the forecast moderate rains are likely to generate sufficient runoff to sustain the steady river rise along both Juba and Shabelle Rivers. The levels along Juba may tend towards the moderate flood risk level but chances of exceedance are low since the waters continuously flow downstream.

The very heavy cumulative rainfall of over 150 mm forecast over some northern parts of Baydhaba district in Bay region; Xudur district and southern parts of Tayeeglow district in Bakool region may pose flash flooding risk particularly over known vulnerable areas particularly on or around 18 and 19 April 2025.

The observed and forecast light to moderate rains is likely to alleviate the evolving mild to moderate drought conditions over the southern parts of the country. The onset of Gu rains and particularly moderate to heavy rains forecast over southwest State are likely to lead to enhanced soil moisture conditions favorable for germination of crops and fodder. However, the high temperature and associated evapotranspiration is likely to sustain the severe drought over Puntland, particularly extreme over the central and southern parts of Mudug region, leading to further deterioration of vegetation health, water scarcity, and stressed livelihoods.



Graph 2: Juba River level at Luuq Gauging Station as of 15 April 2025

SWALIM is a multi-donor project managed by FAO and currently funded by The European Union, UKaid, SDC, AICS and Government of France and Government of Sweden

