

## SOMALIA WEEKLY WEATHER FORECAST

Valid From 17 to 23 Oct 2024

**Rainfall expected to spread southwards from Somaliland and parts of Puntland to the central regions (Galmudug, Hiraan and Bakool) with low likelihood of reaching the inland areas in southern regions (Lower Juba, Middle Juba, Lower Shabelle and Middle Shabelle)**

### Review of Weather for the Period 8 – 14 October 2024

During the review period, light to moderate rainfall was observed in some parts of Somaliland and Puntland with the rest of the country remaining generally dry. Moderate rains of between 50.0 mm and 100.0 mm were observed in some individual stations such as Xasbahale (63.0 mm) and Burtinle (55.5 mm) in Nugaal region. Significant rains of between 20.0 and 50.0 mm was also recorded at the following stations: Garowe (49.0 mm) in Nugaal region, Las Anod (32.0 mm) in Sool region, and Balli Dhiddin (28.3 mm) in Bari region. It is important to note that much of this rain was observed on a single day (13 October 2024).

The Juba and Shabelle River catchments have generally remained dry within Somalia and in the lower reaches across the country. Light rains have been observed in the far upper catchments in Ethiopian Highlands. Along the Shabelle River, steady rise has been observed at Belet Weyne to slight above moderate flood risk level. The water levels along the Juba River have been sufficiently below flood risk levels since May and below both 2023 and LTM levels since last week.

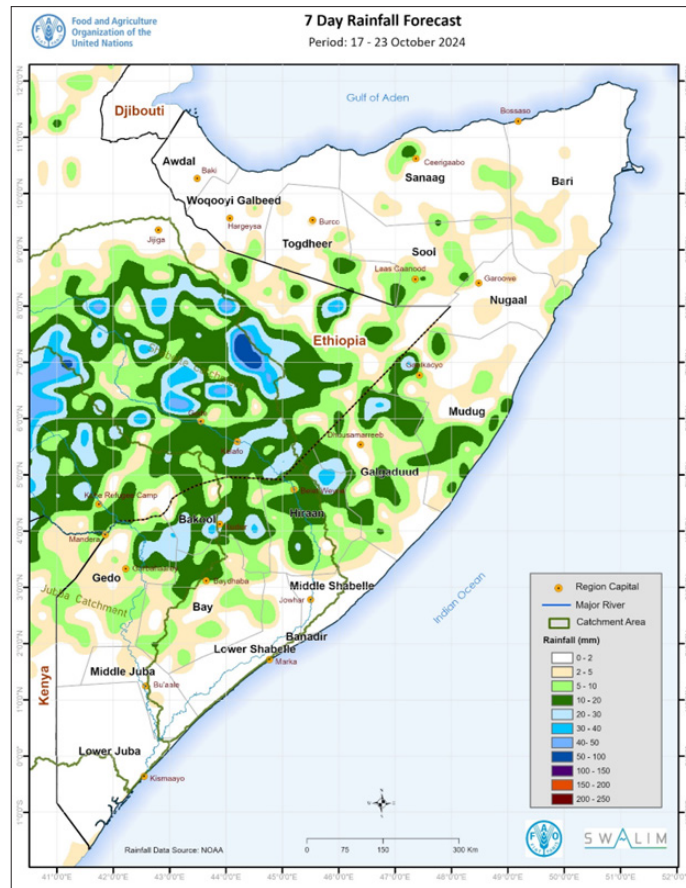
### Forecast of the Weather for the Period 17 to 23 October 2024

Based on the seasonal forecast, the third week of October signals the onset of Deyr rains over much of the country with general southwards spread from Somaliland. According to NOAA-NCEP GFS the previous rains and cloudiness over the north is forecast to spread southwards from Somaliland and parts of Puntland with the southward migration of the ITCZ to the central regions leading up to moderate amounts of about 50 mm. However, this southward spread is expected to weaken thereby leading to only light rains and dry conditions further south particularly over inland areas.

The spatial spread of the forecast rainfall conditions are as follows:

**Moderate rainfall of between 50.0 and 100.0 mm** is likely to spread southwards this coming week to some isolated parts of the following central regions: Galmudug, Mudug, Hiraan and Bakool. Moderate rains are also likely over some areas in within the Shabelle and Juba River catchments in Ethiopia.

**Light rainfall of less than 50.0 mm** is expected over other areas in the central parts of the country including Galmudug, Mudug, Hiraan and Bakool regions. Light rains are also likely over vast areas within the Shabelle and Juba River catchments in Ethiopia. The cloudiness over Bakool is likely to spread further leading to light rains over Luuq and Garbahaarey districts in Gedo region and Baidoa district in Bay region. Light coastal rains are likely over Lower Juba and Middle Juba regions.



Map 1: Cumulative rainfall forecast over Somalia between 17 and 23 October 2024

**Dry conditions** are likely to prevail over with the inland areas in southern regions including over Lower Juba, Middle Juba, Lower Shabelle, Middle Shabelle regions, Doolow, Belet Xaawo, Baardheere districts in Gedo region, Qansax Dheere, Dinsoor and Buur Hakaba districts in Bay region.

### Current River Levels

After last week's remarkable drop in the water levels along the Shabelle River from the unusual rise in September, a steady rise has been observed at Belet Weyne. The level (6.70 m) observed today (17 October) represents 1.20 m rise above the level observed on 8 October (5.50 m) and is 20 cm above the moderate flood risk level (6.50 m). The level is higher than both the 2023 and LTM.

The water levels at Bulu Burte have been on a downward trend from the 2024 peak (7.64 m) observed on 29 September 2024. The level (5.44 m) recorded today (17 October) is more than 1.0 m below the moderate flood risk level (6.50 m) but is still above both the 2023 and LTM levels. The levels at Jowhar have been stable in the last two months.

The level (4.50 m) observed today (17 October) is 50 cm below the moderate flood risk level (5.00 m). The level is equivalent to the 2023 and slightly above the LTM level.

The water levels along the Juba River have been sufficiently below flood levels since May and below both 2023 and LTM levels since last week. The observations made today (17 October) at Dollow (3.24 m) and Luuq (3.12 m) represent about 30 cm rise above last week's (8 October) measurements.

Figures 1 and 2 show the current river levels against the Short Term Mean and 2023 levels for Belet Weyne and Luuq stations respectively.

### Impacts Associated with the Weekly Weather Forecast

The light to moderate rains forecast over the Shabelle and Juba River catchments in Ethiopia is likely to generate some runoff that will only lead to a noticeable rise in the river levels afterwards. The runoff is therefore likely to sustain the steady rise at Belet Weyne along the Shabelle River and at both Dollow and Luuq along the Juba River. Since the water levels at both Dollow and Luuq are sufficiently below flood risk levels, the rise at Belet Weyne is worth monitoring as it is already above moderate flood risk level.

The downward trend at Bulo Burte is likely to stop as the water flows downstream from Belet Weyne. The water volumes along the river stretches are continuously being monitored for any rapid peaks that might be occasioned by run off from past rains in the uppermost parts of the catchments in Ethiopian Highlands and any scheduled dam operations.

The observed moderate rainfall over the agropastoral livelihood zones in the central parts of Somaliland, coupled with the relatively good Gu and Karan rains over most parts of the region are likely to lead to continued replenishment and recharge of surface and groundwater water sources, and better soil moisture retention offering an opportunity for sustained livelihood activities.

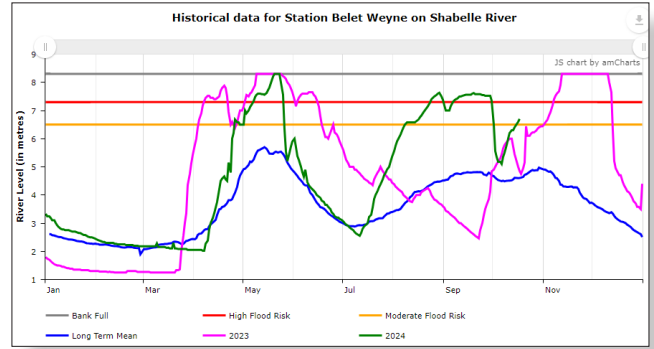


Figure 1: Shabelle river level at Belet Weyne gauging station as on 17 October 2024

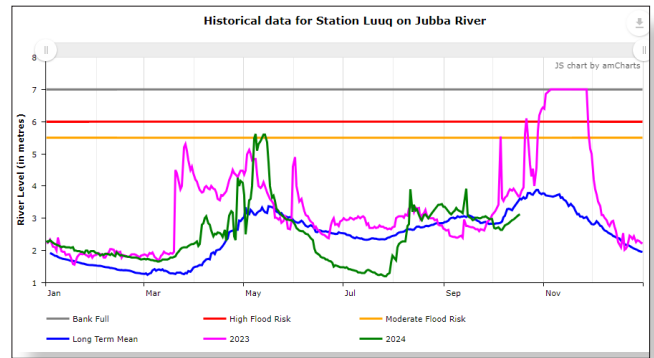


Figure 2: Juba River level at Luuq gauging station as on 17 October 2024

As the rains spreads southwards to the central regions, the conditions will depict ideal for such agropastoral livelihoods as land clearance paving way for Deyr seasonal crop planting. However, it is advisable that short season crops and fodder should be considered in view of the forecast below normal rains.

SWALIM is a multi-donor project managed by FAO and currently funded by The European Union, SDC, FCDO, AICS, Government of France and USAID



Funded by  
the European Union

Schweizerische Eidgenossenschaft  
Confédération suisse  
Confederazione Svizzera  
Confederaziun svizra  
  
Swiss Agency for Development  
and Cooperation SDC

AGENZIA ITALIANA  
PER LA COOPERAZIONE  
ALLO SVILUPPO

British Embassy  
Mogadishu

RÉPUBLIQUE  
FRANÇAISE  
Liberté  
Égalité  
Fraternité

USAID  
FROM THE AMERICAN PEOPLE