

SOMALIA WEEKLY WEATHER FORECAST

Valid From 22- 28 April 2025

Review Summary:

- Rainfall during the first month of the Gu season has been above normal in southern Somalia but remains significantly below normal across most of Somaliland and Puntland.
- In the past week (15–21 April 2025), light to moderate rains were observed across southern and central Somalia, with heavier rainfall reported in Hiraan (e.g., Bulo Burte: 134.5 mm), Bay (Baidoa: 100.8 mm), and Lower Shabelle (Wanla Weyn: 107.8 mm)
- These rains contributed to a steady rise in river levels along the Shabelle and Juba Rivers, though with slight fluctuations
- Flash floods were reported in Mataban (Hiraan) and Baidoa (Bay)
- Northern regions including Somaliland and Puntland remained largely dry.

- The onset of Gu rains has enhanced soil moisture and supported crop germination in the south, though persistent dry spells and high temperatures in the north continue to stress livelihoods and natural resources

Forecast Highlight:

- Widespread light to moderate rainfall is expected over the southern and central parts of Somalia, particularly in the Lower Juba, Middle Juba, Bay, and Lower Shabelle regions
- These rains are expected to contribute to further improvements in vegetation and water availability in the south
- Meanwhile, most parts of Somaliland and Puntland are likely to remain dry
- Ongoing high temperatures may sustain severe drought and heat stress, particularly in Puntland and parts of northern Somalia

Weather Review

Rainfall Review: About a month into the Gu season, cumulative rainfall totals range between 150 mm and 250 mm across most parts of Lower Juba, Middle Juba, and Bay regions, as well as in some areas of Gedo, Lower Shabelle, and Bakool. Hirshabelle and parts of Galgaduud have received between 75 mm and 150 mm. In the south, rainfall has been slightly above normal in many areas, with significantly above-normal totals observed in Lower Juba, Middle Juba, and southern Gedo. In contrast, most areas in Somaliland have recorded less than 75 mm, while Mudug and Bari regions in Puntland have remained generally dry, receiving less than 25 mm. Rainfall across Somaliland and Puntland is significantly below normal.

Widespread light to moderate rains were generally observed in the southern parts of the country with some parts of Bay and Lower Juba observing heavier rains cumulating to more than 100 mm at the end of the observation period (15 - 21 April 2025). Rains were light over most parts of Somaliland with dry conditions and very light scattered rains prevailing over Puntland. Based on actual observations, the following individual stations recorded heavy rainfall of between 100 mm and 150 mm: Bulo Burte (134.5 mm) and Mataban (115.7 mm) in Hiraan region; Wanla Wayne (107.8 mm) in Lower Shabelle region; and Baidoa (100.8 mm) in Bay region. Moderate rains of between 50 mm and 100 mm were observed over Belet Xaawo (84.9 mm) in Gedo region; Marka (65.2 mm) and Aw dheegle (44.8 mm) in Lower Shabelle region; Buur Hakaba (56.0 mm) in Bay region; and Jowhar (51.0 mm) in Middle Shabelle region. Light rains of below 50 mm were recorded at Mahas (44.9 mm) and Belet Weyne (5.5 mm) in Hiraan region; Ceerigaabo (34.5 mm), Dhahar (27 mm) and Garadag (8.0 mm) in Sanaag region; Bu'alle (33.0 mm) in Middle Juba region; Cadaadley (33.0 mm) in Woqooyi Galbeed region; Balcad (31.7 mm) and

Cadale (16.5 mm) in Middle Shabelle region; Waridaad (27 mm) and Caynabo (11.0 mm) in Sool region; Balli Dhiig (25.5 mm) and Owdweyne (8.5 mm) in Togdheer region; Afgooye (19.0 mm) in Lower Shabelle region; Mogadishu (7.3 mm) in Banadir region.

River Levels Review: Water levels have generally risen along the Shabelle Rivers over the past one week in response to run off occasioned by light to moderate rains in the upper catchments. The sharp rise in water levels observed at Jowhar in the first week of April has briefly dropped. The water levels along the Juba River have fluctuated in the last one month with a general drop observed in the last one week because of a reduction in rainfall intensity in the upper catchments of the Juba River and specifically at Dollow and Luuq.

Floods Review: The moderate to heavy rains are reported to have led to significant surface runoff leading to flash floods over Mataban in Hiraan region and Baydhaba in Bay region including windblown destruction of trees and iron sheets roofed buildings and structures.

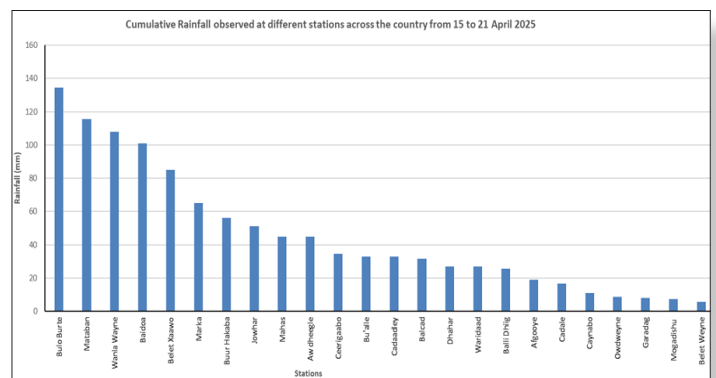


Figure 1: Cumulative rainfall observed at different stations across the country from 15 to 21 April 2025

Weather Forecast for the Week Between 22 - 28 April 2025

Rainfall Forecast:

Based on the NOAA-NCEP Global Forecasting System (GFS) forecast, light to moderate rain is expected over several areas in the southern parts of the country with dry conditions expected to prevail over Somaliland and Puntland. The temporal and spatial distribution of the forecast rainfall (*Map 1*) are as follows:

Light cumulative rainfall of less than 50 mm is forecast over several areas in the southern parts of the country including most parts of Lower Juba, Middle Juba, Bay, and Lower Shabelle regions; some parts of Gedo particularly Ceel Waaq and Bardheere districts; parts of Middle Shabelle region particularly Jowhar and Balcad districts; parts of Bakool region particularly Xudur and Ceel Barde districts; western parts of Belet Weyne district in Hiraan region; southern parts of Gebiley district and Hargeisa town in Woqooyi Galbeed region; Buuhoodle district and southern parts of Burco district in Togdheer region; northern coastal parts of Laasqoray district in Sanaag region. It is important to note that such rains are likely to fall over the Juba River catchment within and outside the country. While the rains over the upper and central catchment of the Shabelle River will be very light, they may increase in intensity over the lower sections in Middle Shabelle including Jowhar.

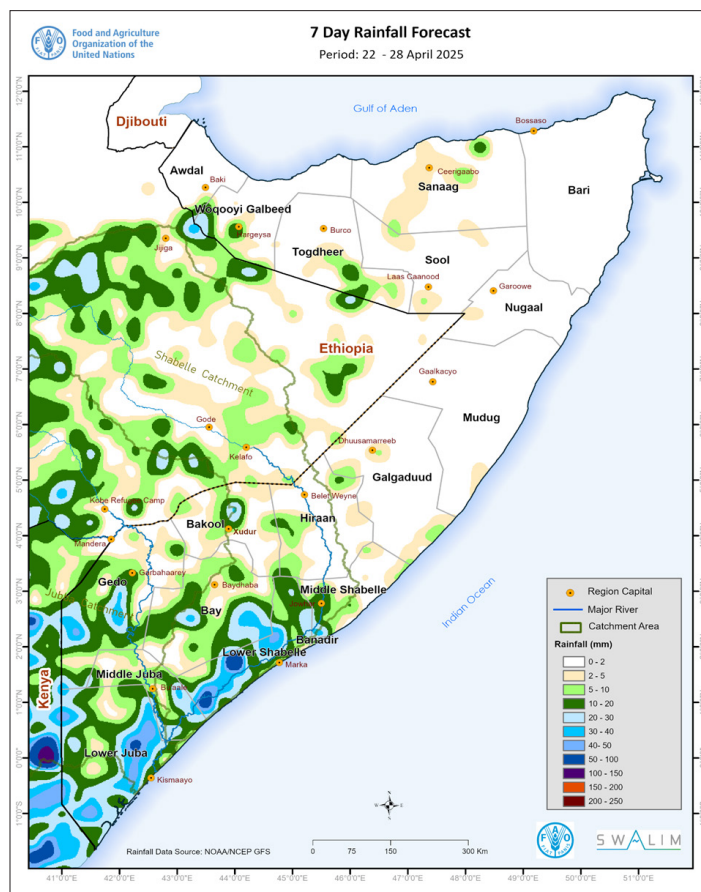
Moderate cumulative rainfall of 50 mm to 100 mm is likely to occur over isolated areas in Lower Juba region particularly southern parts of Afmadow district; and areas bordering Sablaale and Baraawe districts and northern border areas of Kurtunwarey and Qoryooley districts in Lower Shabelle region. **It is important to note that intense but isolated rains of above 100 mm may be observed over areas in Lower Juba bordering Kenya.**

Dry conditions are likely to prevail over most parts Awdal, Woqooyi Galbeed, Togdheer, Sanaag, Sool, Bari, Nugaal, Mudug and Galgaduud regions; most parts of Hiraan region particularly Bulo Burte and Jalaqsi districts and eastern parts of Belet Weyne; eastern parts of Middle Shabelle region particularly Adan Yabaal district and the northern parts of Cadale district; and some parts of Bakool region particularly Waajid, Rab Dhuure and Tayeeglow districts.

Temperature Forecast:

Compared to last week, slightly higher maximum temperature (*Map 2*) is expected this week with notable coastal cooling influence over the entire eastern strip. There are persistent low thermal conditions in the north particularly Ceerigaabo, Borama and Gebiley districts and nocturnal coastal warming with marked influence stretching far inland over Galgaduud and Mudug regions. The spatial variation of forecast temperature is as follows:

Based on **minimum temperature**, coolest night time thermal conditions (15 °C and 20 °C) are likely over inland areas in Ceerigaabo district in Sanaag region, northern parts of both Owdweyne and Burco districts in Togdheer region; Qandala district in Bari region; southern parts of Awdal region particularly Borama district and southern areas of Zeylac district; southern parts of Woqooyi Galbeed particularly the southern areas in both Gebiley and Harqeysa districts. The warmest night time thermal conditions (25 °C and 30 °C) are likely over most areas in Galgaduud and Mudug regions;



Map 1: Weekly cumulative rainfall forecast over Somalia from 22 - 28 April 2025

Rainfall and Temperature Classification

- Dry conditions: 0 mm
- Light rain: 0 to 50 mm
- Moderate rain: 50 to 100 mm
- Heavy rain: 100 to 150 mm
- Very heavy rain: more than 150 mm
- Low temperatures: Below 25 °C
- Moderate temperatures: 25 °C to 30 °C
- Moderately high temperatures: 30 °C to 35 °C
- High temperatures ranging: 35 °C to 40 °C
- Very high Temperature: More than 40 35 °C

Banadir region including Mogadishu; central parts of Hiraan stretching from Belet Weyne to Jalaqsi districts; northern parts of Jowhar district and coastal parts of Middle Shabelle stretching from Balcad to Adan Yabaal; Afgooye and Marka districts, northern parts of Wanla Weyn district, and narrow coastal parts of Kurtunwaarey district in Lower Shabelle region; and the narrow southern coastal strip; and Doolow and Luuq districts in Gedo region. The rest of the country is likely to experience moderate nighttime thermal conditions ranging from 20 °C and 25 °C.

High daily maximum temperatures ranging from 35 °C to 40 °C are expected over most inland parts of Galgaduud and Mudug regions; Afmadow district and inland parts of both Badhaadhe and Kismaayo districts in Lower Juba region; Bu'aale district, some parts of Saakow district and inland parts of Jilib district in Middle Juba Region; Dinsoor district and southern parts of Bur Hakaba district in Bay region; Sablaale and Wanla Weyn districts and northern inland parts of both Kurtunwarey, Qoryooley and Afgooye districts in Lower Shabelle region; Doolow, Luuq and

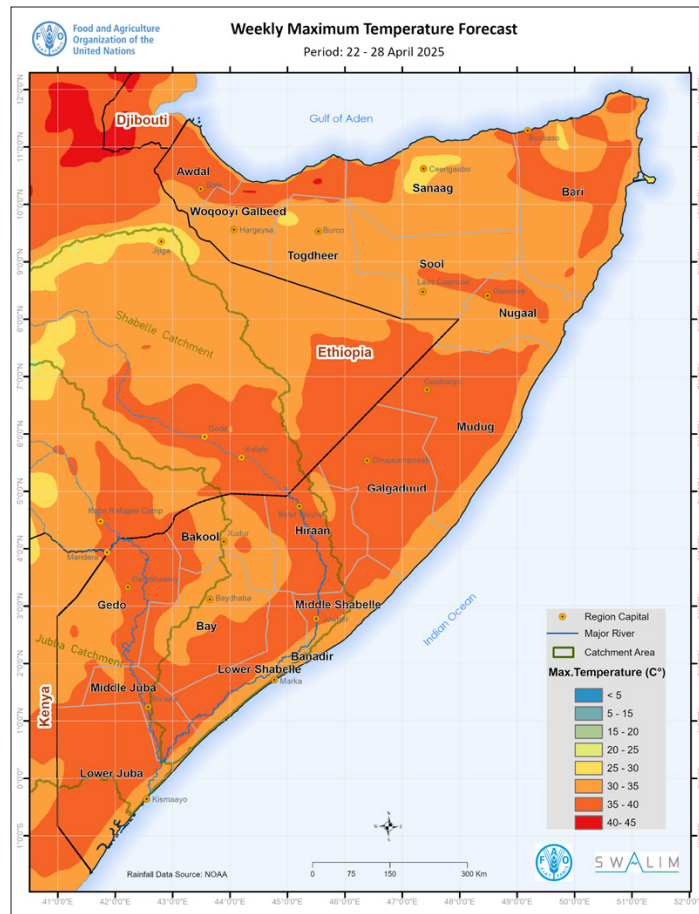
Garbahaarey districts and some parts of Bardheere district in Gedo region; most parts of Rab Dhuure and Waajid districts in Bakool region; most parts of Hiraan region; Zeylac, Luqhaye and Baki districts in Awdal region; Berbera district and northern parts of both Gebiley and Hargeisa districts in Woqooyi Galbeed region; northern parts of Ceel Afweyn district in Sanaag region; Bassaso district, some parts of Caluula district, inland parts of Iskushuban district in Bari region; most parts of Garoowe district in Nugaal region and northern parts of Laas Caanood district in Sool region. **There are isolated areas in Berbera district and far north parts of Hargeisa district in Woqooyi Galbeed region where temperatures may rise above 40 °C.**

Moderately high daily maximum temperatures ranging from 30 °C to 35 °C are likely over most parts Togdheer region; southern parts of Awdal region particularly Borama district; southern parts of both Gebiley and Harqeysa districts in Woqooyi Galbeed region; Sool region particularly Caynabo, Xudun, and Taleex districts and southern parts of Laas Caanood district; Laasqoray district and southern parts of both Ceel Afweyn and Ceerigaabo districts in Sanaag region; Qardho and Bandarbeyla districts and south parts of Qandala district in Bari region; Burtinle and Eyl districts in Nugaal region; Tayeeglow and Xudur districts and eastern parts of Ceel Barde district; Baydhabo district and northern parts of Qansax Dheere district in Bay region; Belet Xaawo and Ceel Waaq districts and north parts of Baardheere district in Gedo region.

Moderate daily maximum temperatures ranging from 25 °C to 30 °C are forecast over northern parts of Ceerigaabo district in Sanaag region, north parts of Qandala district in Bari region and isolated northern areas in Oodweyne district in Togdheer region.

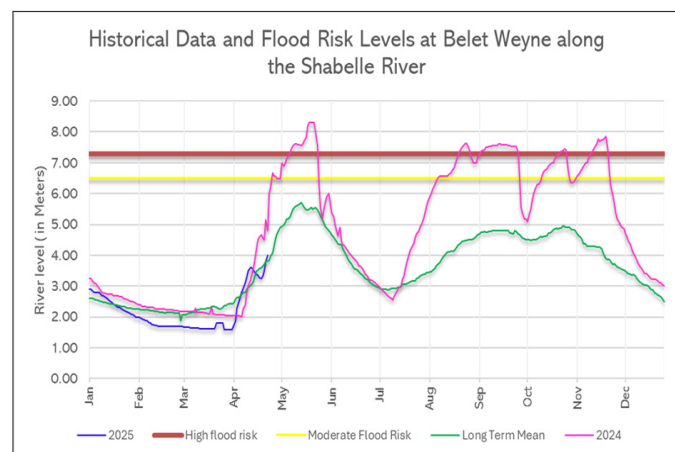
Current River Levels

At **Beledweyne** along the Shabelle River, there is an increase in water levels with today's reading (4.00 m) representing a 62 cm rise from last week's level (3.38 m). The current level is 19 cm above the LTM level (3.81 m) but 1.15 m below the 2024 level (5.15 m). A similar steady pattern has been observed at **Bulo Burte** with today's level (3.20 m) being 40 cm above last week's record (2.80 m). It is noteworthy that today's level is generally converging with the LTM and 2024 level. The steady rise has been driven by run off occasioned by light to moderate rains over the upper catchments. A sharp rise in water levels at **Jowhar** in the first week of April led to a 4.70 m peak on 10 April which has today briefly dropped to 4.00 m.

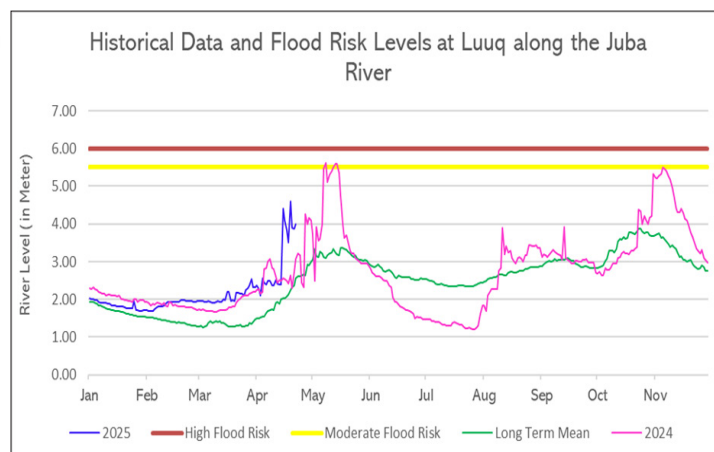


Map 2: Weekly maximum temperature forecast over Somalia from 15 - 21 April 2025

Today's level at **Doolow** (3.20 m) represents a 26 cm rise above last week's value (2.94 m) and is almost equivalent to last year's record and about 60 cm above LTM. At Luuq station along the Juba River, there has been a 40 cm decrease from the last week's reading (4.40 m) with today's level (4.40 m) being 1.80 m above the LTM (2.60 m) and 1.32 m above 2024 level (3.08 m). This fluctuation with a general drop is likely to be driven by a reduction in rainfall intensity in the upper catchments of Juba River and specifically at Dollow and Luuq. It is expected that the river flow downstream will lead to similar fluctuations below moderate flood risk levels at Bardheere and at Bualle.



Graph 1: Shabelle River level at Belet Weyne Gauging Station as of 22 April 2025



Graph 2: Juba River level at Luuq Gauging Station as of 22 April 2025

Impacts Associated with the 22 - 28 April 2025 Weekly Forecast

The cumulative hydrological impact of antecedent rainfall events in the upper catchments, combined with the recent precipitation across the central Shabelle basin, is expected to sustain continued river level increases at Belet Weyne and Bulo Burte. Forecasted light rains across the broader Shabelle catchment are anticipated to generate adequate surface runoff to support this trend. In Jowhar, where river levels had recently declined, a gradual recovery is likely in response to these rains with tendency to approach moderate flood risk level by the end of the forecast week.

Along the Juba River basin, light to moderate rainfall is projected to induce short-term variability in river flow. While increases in water levels are expected, they are likely to remain below thresholds associated with riverine flooding.

Across the southern regions, the ongoing light to moderate rainfall is contributing to the alleviation of the residual mild to moderate drought conditions. The onset of the Gu rainy season is expected to significantly improve soil moisture, supporting crop germination and pasture regeneration for areas planted in mid April.

Localized dry spells in Hiraan—especially in Bulo Burte, Jalaqsi, and eastern Belet Weyne—along with parts of Middle Shabelle (notably Adan Yabaal and northern Cadale), and select districts in Bakool (Waajid, Rab Dhuure, and Tayeeglow), are likely to facilitate field operations such as weeding for crops planted earlier in the season.

In contrast, high temperatures and elevated evapotranspiration rates are expected to exacerbate drought conditions in Puntland, with particularly severe impacts across central and southern Mudug. These conditions will likely contribute to declining vegetation health, worsening water scarcity, and increasing stress on local livelihoods. Furthermore, extreme heat stress may occur in isolated parts of the Berbera and northern Hargeisa districts (Woqooyi Galbeed), where daytime temperatures could exceed 40 °C.

SWALIM is a multi-donor project managed by FAO and currently funded by The European Union, UKaid, SDC, AICS and Government of France and Government of Sweden

