

SOMALIA WEEKLY WEATHER FORECAST

Valid From 8 to 14 April 2026

Forecast Highlight:

- Light rains are expected in parts of the Awdal, Woqooyi Galbeed, Sanaag, Togdheer, Lower Juba, Middle Juba, and Gedo regions
- Normal to above-normal April rainfall is favored over much of southern and central Somalia, though heavy rain is unlikely in early April
- Forecast rains may bring only localized relief, while residual drought in southern Somalia and continued heat stress remains a key concern
- River levels remain below flood risk thresholds, but Shabelle River at Belet Weyne should be monitored closely

Review Summary:

- During the past week, moderate rains were observed in some parts of Woqooyi Galbeed and Togdheer regions, while many other areas remained dry or received only light rain
- The Shabelle rose sharply at Belet Weyne, while the Juba remained stable but elevated; both rivers stayed below flood risk levels
- Drought conditions have improved in many parts of Somalia, but southern hotspot areas remain under stress, with recovery still uneven and fragile

Review of Observed Monthly and Weekly Weather Conditions and Impacts

Observed Rainfall Conditions

During 1–6 April 2026, the highest station rainfall totals were recorded at Xaaji Saalax (76.5 mm), Gacan-libah (61.0 mm) and Lasciidle (26.0 mm) in Woqooyi Galbeed and Fiqi Ayub in Togdheer (51.0 mm). Light rainfall of 20 – 30 mm was observed at Ceel Afweyn in Sanaag (28.5 mm), Boon in Awdal (24.0 mm), and Cada in Waqooyi Galbeed (20.0 mm), while most other stations recorded less than 20 mm. Last week's rainfall was well distributed in time at Xaaji Saalax, Fiqi Ayub, Cadaadley, Dooxaguban, and Caynabo, where totals were recorded over three rainy days.

As shown in **Figure 4-6**, the heaviest cumulative Gu rainfall totals above 100 mm since 1 March 2026 have been observed in Awdal and Woqooyi Galbeed regions and some parts of Gedo region particularly in the following individual stations: Boon (171.0 mm), Baki (140.0 mm) and Xeeego (102.0 mm) in Awdal region; Las Dacawo (137.0 mm), Hargeisa (125.0 mm), Cadaadley (123.5 mm), Gacan-libah (111.0 mm), Berbera (104.5 mm) and Dilla (104.0 mm) in Woqooyi Galbeed region and Dollow (133.4 mm) in Gedo region.

Observed River Levels

The Shabelle River has risen sharply, especially at Belet Weyne, where the level increased from 4.20 m to 5.00m since 31 March, but it is still below the moderate flood risk level. Water levels also rose at Bulu Burte and Jowhar, though the increase is smaller downstream; Belet Weyne and Bulu Burte are now above last year's levels and the long-term mean, while Jowhar remains below both.

The Juba River has remained mostly stable over the past week, with Dollow unchanged and Luuq rising slightly. Both stations are still below flood risk levels but remain higher than last year and above the long-term mean.

Impacts

Latest Radio Ergo audience feedback showed a mixed but still predominantly drought-affected situation across Somalia. While callers from parts of Sanaag, Puntland, Galgaduud, Hiraan, Middle Shabelle, Lower Juba, and Gedo reported rainfall and some localized improvement in water availability and cooling conditions, many others said the rains were scattered, limited, or had not yet brought meaningful relief.

The dominant concerns remained drought, water shortages, livestock losses, food insecurity, and livestock disease, especially in parts of Mudug, Galgaduud, Hiraan, Middle Shabelle, Bay, Bakool, Gedo, and Lower Juba. Callers also raised concerns about crop pests, intense heat affecting IDP households, and the risk of river flooding near settlements in Belet Weyne, showing that although some rainfall was received, livelihood stress remained severe and recovery was still limited and uneven.

Drought Conditions

As of 31 March 2026, the Combined Drought Index (Figure 1) indicates persistent moderate to severe drought in most parts of Lower Shabelle, Middle Shabelle, Bay, Lower Juba, Middle Juba regions and some parts of Gedo, Bakool, Hiraan and Nugaal regions and coastal parts of Bari region. The drought conditions are extreme over Bu'aale district in Middle Juba, Sablaale and Kurtunwaarey districts in Lower Shabelle region and Buur Hakaba district in Bay region.

There is a marked improvement in drought conditions across much of the country, especially in northern, central and parts of southern Somalia, where many areas shifted to normal or mild drought conditions. Therefore, while drought conditions have eased significantly compared to January and February, southern Somalia remains the main residual drought hotspot.

Monthly and Weekly Weather Forecast

Rainfall and Temperature Forecast for April 2026

According to ICPAC, normal to above normal cumulative rains are expected over southern and central parts of Somalia in the month of April. There is more than 50 % chance that above normal rainfall will be observed over Gedo, Hiraan, Galgaduud, and Mudug regions. Above normal rains are also likely over Borama district and southern parts of Zeylac district in Awdal region; Kismaayo and Jamaame districts and southern parts of Afmadow district in Lower Juba region; and central parts of both Bay and Lower Shabelle regions. There is about 50 % probability that drier than usual conditions will be observed over Bari, Sanaag and Woqooyi Galbeed regions.

However, based on the status and expected evolution of Madden Julian Oscillation, heavy rainfall is not likely over the Greater Horn of Africa including Somalia during the first half of the April. From late April into early May, the MJO is forecast to shift toward Phases 1, 2 and 3, which are generally more favorable for rainfall enhancement over the region. However, because the signal appears weaker during this transition, any improvement in rainfall is likely to be moderate.

Rainfall Forecast for Period 8 to 14 April 2026

According to NOAA-NCEP GFS, light rainfall is expected over most parts of Awdal, Woqooyi Galbeed, Sanaag, Togdheer, Lower Juba, Middle Juba, and Gedo regions. Light rains are also likely over some parts of Bay region particularly Qansax Dheere and Dinsoor districts; some parts of Bakool region particularly Rab Dhuure and Waajid districts; and some parts of Lower Shabelle particularly Sablaale and Baraawe districts. The rains over Borama district, southern parts of Baki district in Awdal region; northern parts of both Gebilley and Hargeisa districts in Woqooyi Galbeed region and northern highlands in Sanaag region may cumulate to over 50 mm by the end of the forecast week.

Temperature Forecast

According to ICPAC, warmer than normal temperatures are expected over Lower Juba, Middle Juba, Lower Shabelle regions in the south and Bari and Awdal regions in the north. Normal conditions are expected over most parts of the country with higher likelihood of cooler than normal conditions over most parts of Bakool, Mudug and Sanaag regions and Hargeisa

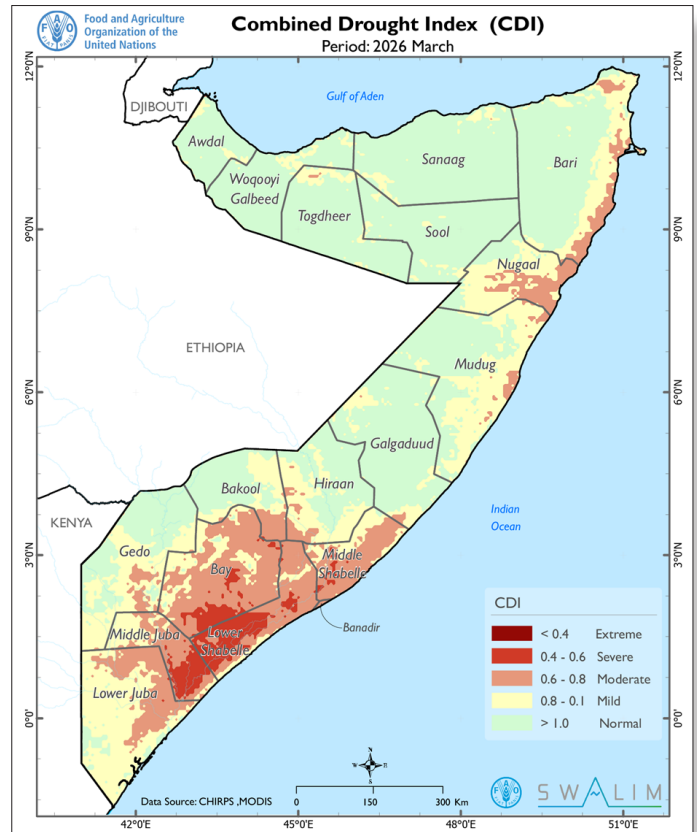


Figure 1: Drought conditions over Somalia based on Combined Drought Index as of 31 March 2026

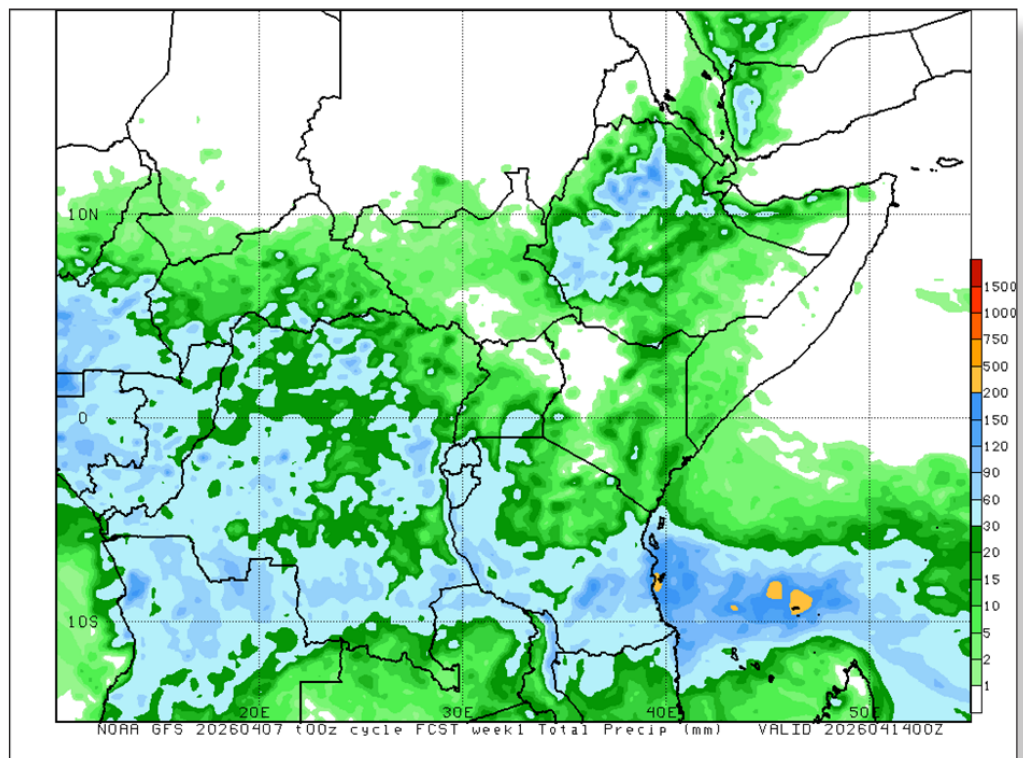


Figure 2: Cumulative rainfall forecast over Somalia between 8 and 14 April 2026

district in Woqooyi Galbeed region, Sheikh district in Togdheer region and Las Canood district in Sool region.

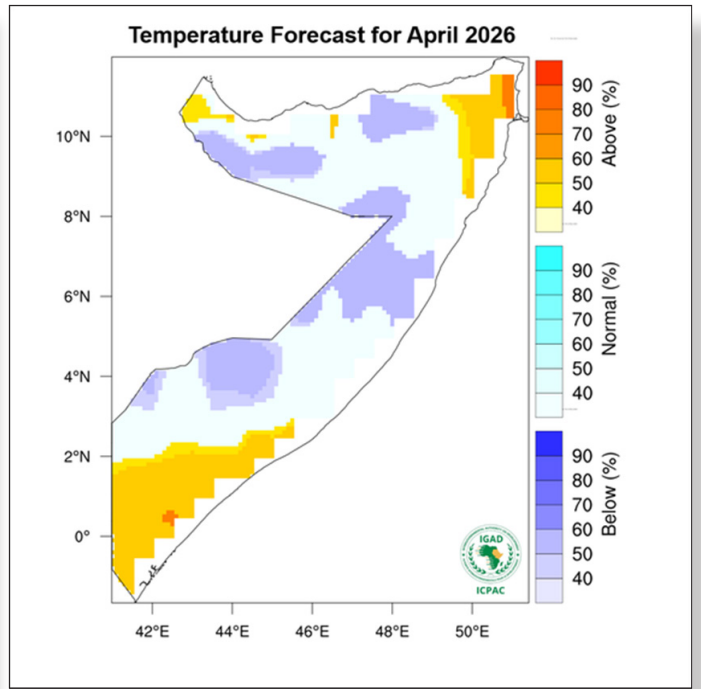
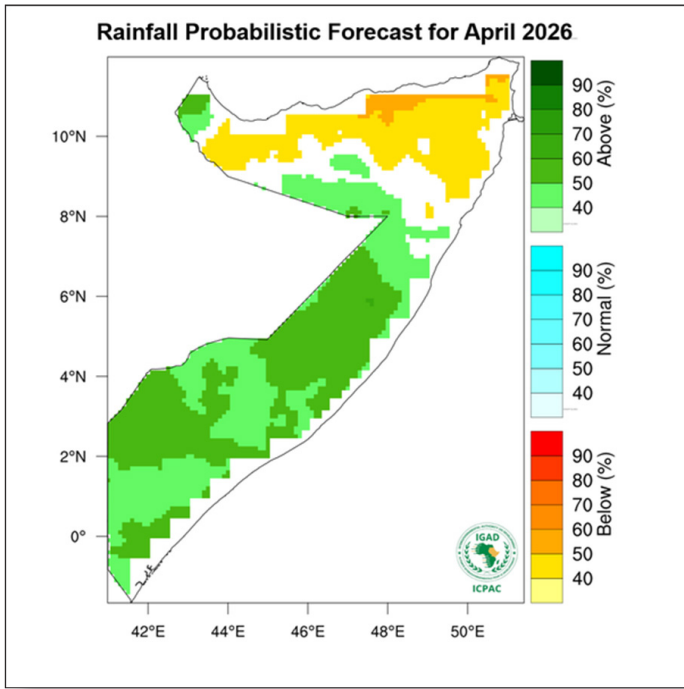


Figure 3: Probabilistic rainfall forecast over Somalia for the month of April 2026

Figure 4: Probabilistic temperature forecast over Somalia for the month of April 2026

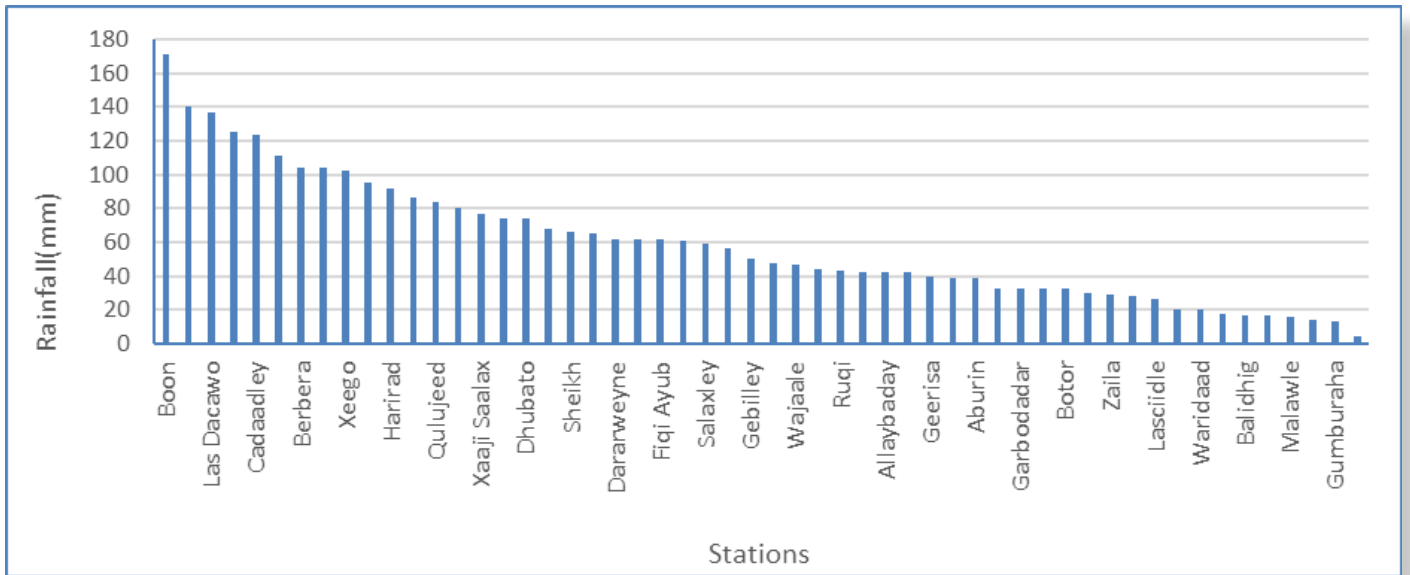


Figure 5: Cumulative rainfall observed at individual stations across Somaliland between 1 March and 6 April 2026

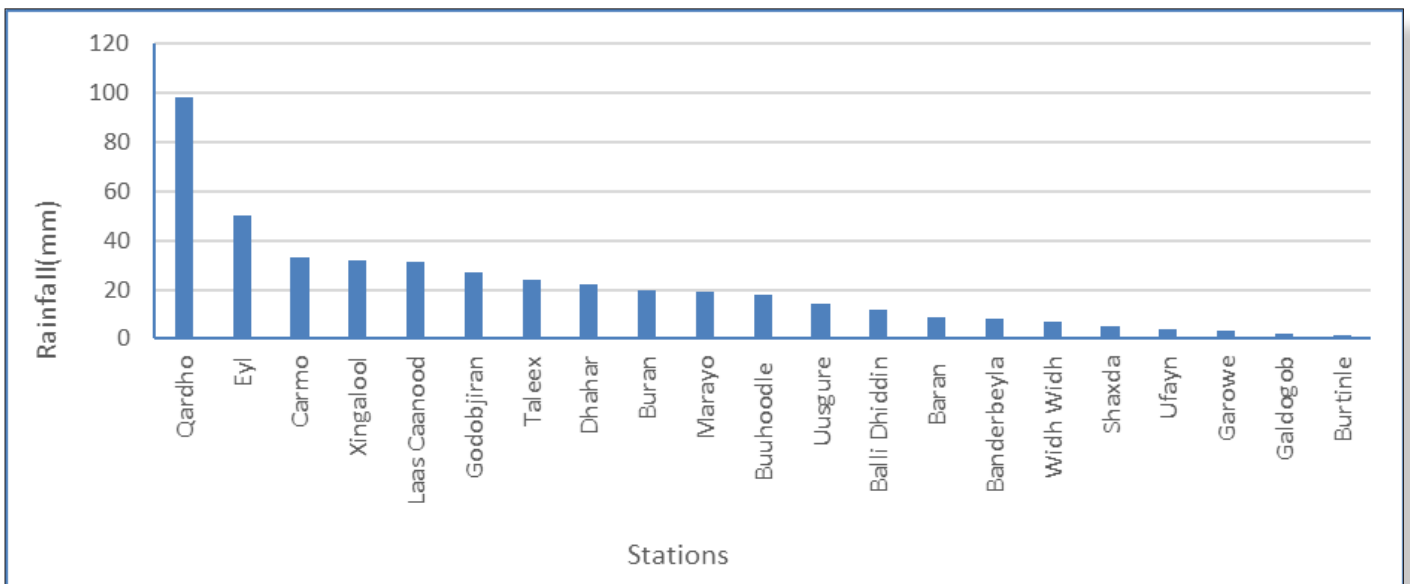


Figure 6: Cumulative rainfall observed at individual stations across Puntland between 1 March and 6 April 2026

Current River Levels

A sharp rise has been observed along the Shabelle River at Belet Weyne (**Figure 7**) with today's levels (5.00 m) representing a 4.20 m rise compared to 31 March record (0.80 m). Although the river levels have risen by 95 cm and 80 cm at Bulu Burte and Jowhar, this marked rise has not yet been observed downstream of Belet Weyne. Today's readings at Belet Weyne (5.00 m), Bulu Burte (1.95 m) and Jowhar (1.60 m) are 1.50 m, 4.55 m and 3.40 m below respective stations' moderate flood risk levels. Today's river level at Belet Weyne (5.00 m) is 3.34 m and 2.56 m above both last year's level (1.66 m) and LTM (2.44 m), respectively. At Bulu Burte, today's level (1.95 m) is 15 cm and 11 cm above both last year's level (1.80 m) and LTM (1.84 m). Today's river level at Jowhar (1.60 m) is 70 cm and 43 cm below both last year's level (2.30 m) and LTM (2.03 m).

Levels along the Juba River have generally been stable for the last one week with today's records at Dollow (3.22m) being the same as measurements taken on 31 March. The 3.40 m recorded

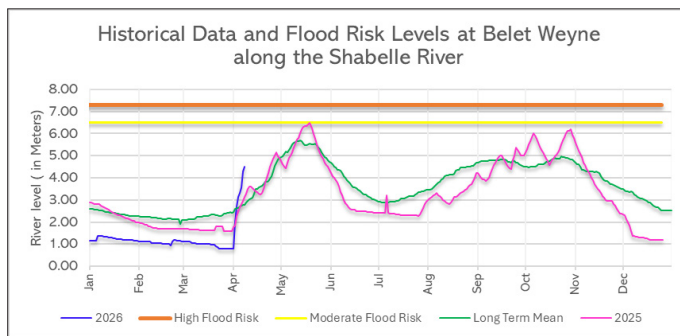


Figure 8: Current levels along the Shabelle River at Belet Weyne Gauging Station as of 8 April 2026 compared to LTM and Flood Risk Levels

Impacts Associated with the Weather Forecast

- **Drought:** Drought conditions have eased in many northern, central, and some southern parts of Somalia. However, moderate to severe drought is still likely to persist in parts of Lower Shabelle, Middle Shabelle, Bay, Lower Juba, and Middle Juba, especially where rainfall remains limited or poorly distributed.
- **Water and pasture:** The forecast rains over parts of Awdal, Waqooyi Galbeed, Sanaag, Togdheer, Gedo, Lower Juba, Middle Juba, and limited parts of Bay, Bakool, and Lower Shabelle are likely to support localized improvement in pasture, browse, and surface water availability. However, recovery is expected to remain uneven and incomplete, particularly in the southern drought hotspot areas identified by the March CDI.
- **Flood Risk:** Although river levels remain below moderate flood thresholds, the recent sharp rise along the Shabelle River at Belet Weyne and the elevated but stable Juba levels at Dollow and Luuq suggest a risk of localized flooding later in April into early May, especially in Belet Weyne

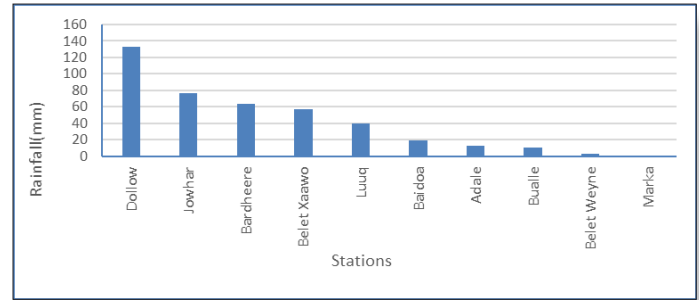


Figure 7: Cumulative rainfall observed at individual stations across South Central Somalia between 1 March and 6 April 2026

today at Luuq (**Figure 8**) is just 30 cm above last week's value. Today's levels at Dollow (3.22m) and Luuq (3.40 m) are 1.28 m and 2.10 m below moderate flood risk levels; 88 cm and 1.08 m above last year's record and 1.87 m and 1.93 m above LTM, respectively.

Figures 7 and 8 show the current station levels against the Long Term Mean and 2025 values along the Shabelle River at Belet Weyne and along the Juba River at Luuq, respectively.

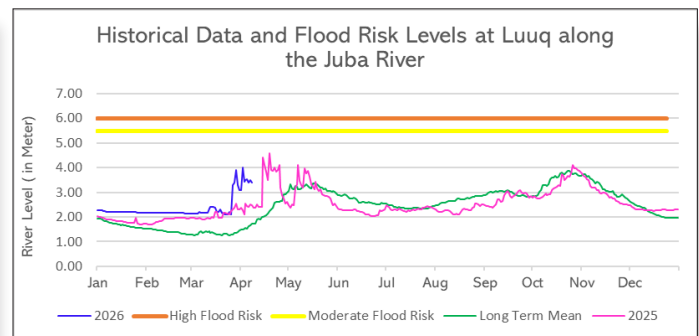


Figure 9: Current levels along the Juba River at Luuq Gauging Station as of 8 April 2026 compared to LTM and Flood Risk Levels

and nearby riverine settlements, if additional upstream and local rains occur. The risk may be heightened by the presence of breakages along the two rivers.

- **Heat Stress:** Continued high temperatures, especially the forecast above-normal April temperatures in Lower Juba, Middle Juba, Lower Shabelle, and Bari, are likely to increase human and livestock heat stress, accelerate evapotranspiration, and slow moisture recovery, especially in areas still under drought stress.
- **Agriculture and Livelihoods:** The forecast dry conditions and light rains support crop and fodder management practices such as weeding, while forecast moderate rains may allow continued staggered planting in some areas. However, the season remains shortened and fragile, and crop and livelihood recovery is likely to remain cautious and uneven due to poor rainfall distribution, residual drought in southern regions, crop pests, livestock disease, and weakened household coping capacity.

SWALIM is a multi-donor project managed by FAO and currently funded by The European Union, UKaid, SDC, GCF, The World Bank, Canada and Government of Sweden

