

Lower Juba River Breakages. Lower Juba Region

WV2 Images (Dec 2012 - Aug 2014)



Raxoole (3 Feb 12) - In Feb 2012 signs of a flood are evident. Water spillage may have taken place from this point. The lack of embankments make this point vulnerable.



Cusmaan (1st Jan 14) - In 2012 and 2013 presence of sediments indicate that overflows occurred from this point. In late 2013 a major flooding occurred but no mitigation measures (embankments) are noticed as of March 2014. DEM and previous reports confirm this vulnerability.



Seylac (24 May 14) - The image of Jan 2012 clearly shows that a breakage was present in this point. In late 2011 and a huge flooding took place. In 2013 and 2014 the breakage is closed. In May 2014 the area is flooded but the spillage is not coming from this point.



Muuna (18 Dec 13) - In Nov 2013 there is evidence of an active breakage at this point causing a major flooding. DEM and image of 2012 shows vulnerability. Images of 2014 show a minor fixing of the breakage, so it is still considered potentially vulnerable.



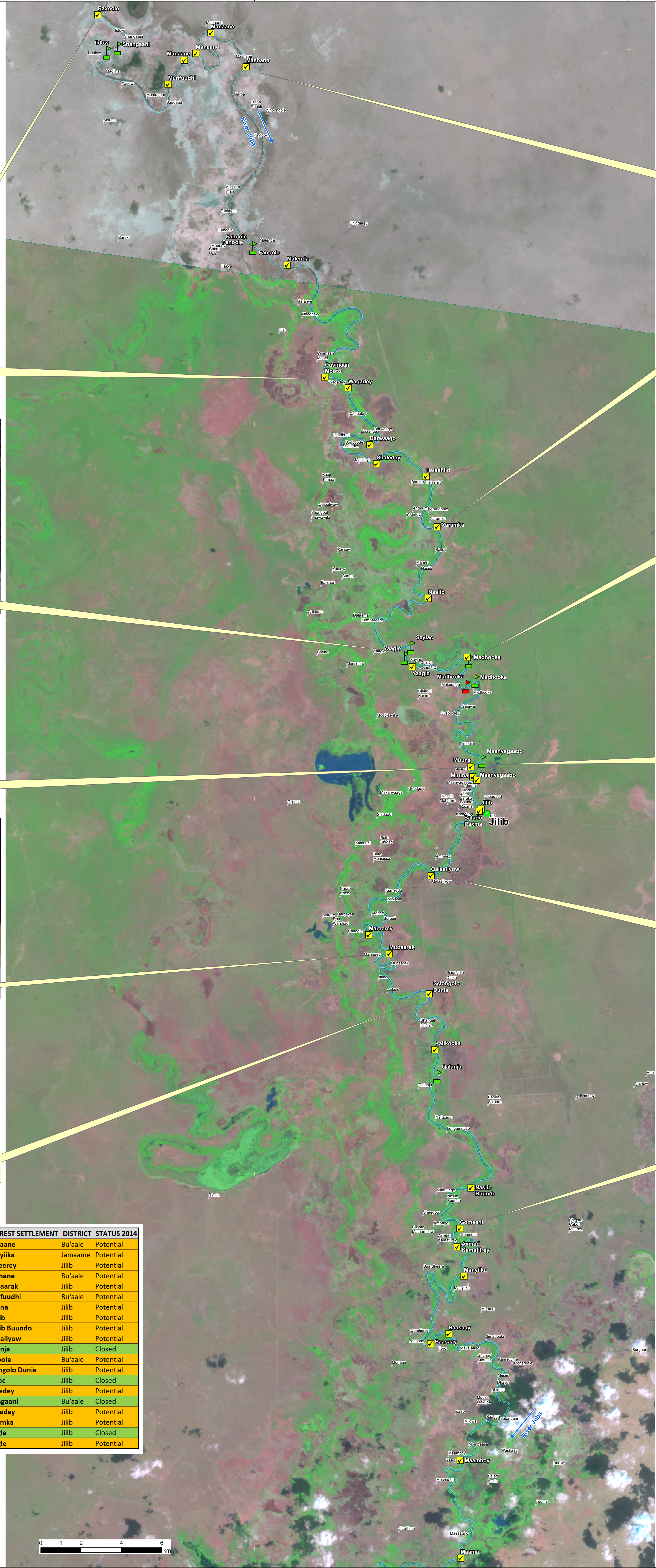
Mubaarak (14 Sept 13) - The images of 2012 and 2013 shows signs of an old flooding branching from this point. DEM confirms vulnerability.



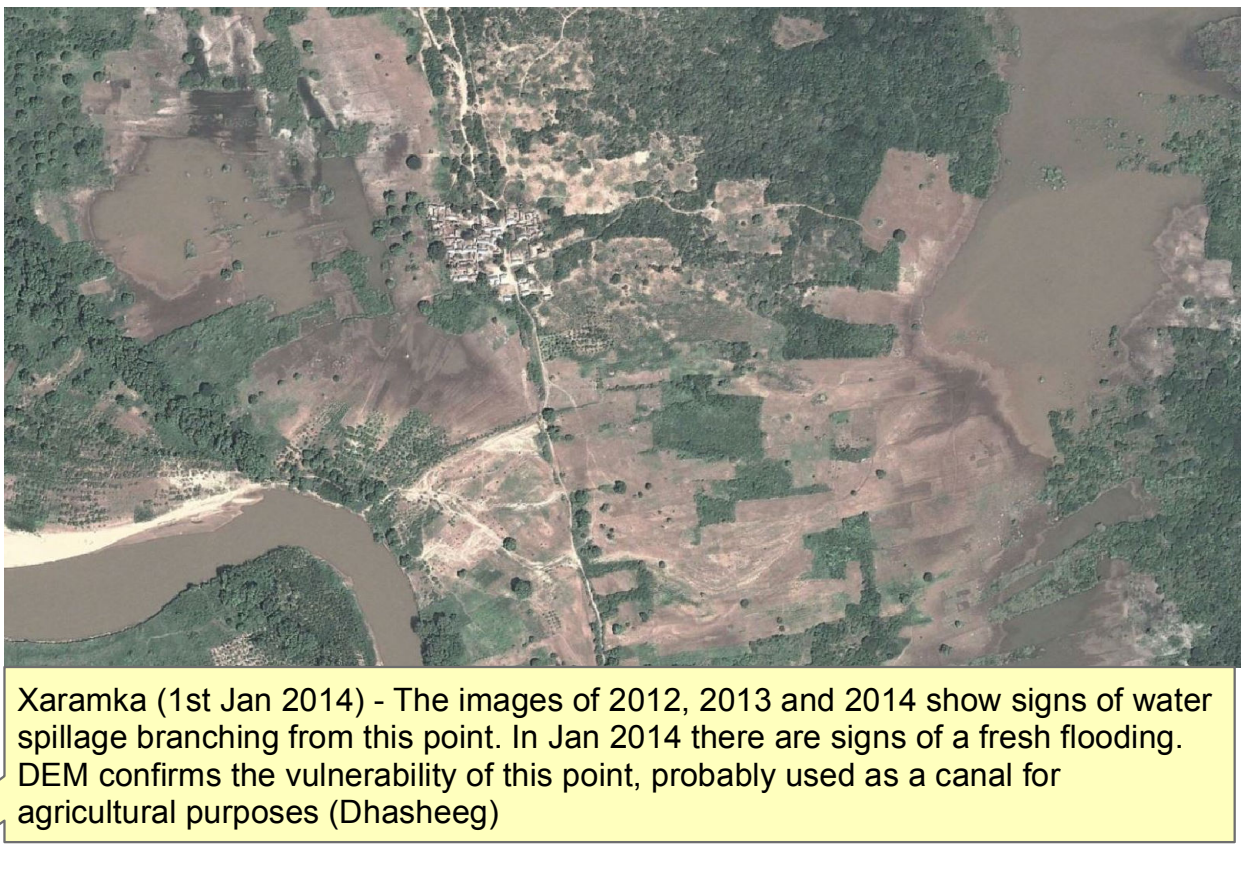
Sciongolo Dunia (30th Aug 14) - In 2012 a breakage was present, producing a major flooding. The image of 2013 is covered by clouds. In Jan 2014 the breakage is visible and seems to be opened. In May and Aug. 2014 signs of flooding are detected but the breakage seems to be closed.

COUNT	NEAREST SETTLEMENT	DISTRICT	STATUS 2014
1	Axmed Kamatiirey	Jamaame	Potential
2	Baasaay	Jamaame	Potential
1	Balado Raxma	Jilib	Potential
1	Barwaago	Jilib	Potential
1	Cusmaan Mooto	Jilib	Potential
1	Fanoole	Jilib	Closed
2	Fanoole	Jilib	Potential
1	Gomeeni	Jamaame	Potential
1	Helashiid	Jilib	Potential
1	Jilib	Jilib	Potential
1	Kalikooka	Jilib	Potential
1	Lidow	Bu'aale	Closed
1	Maama	Jamaame	Potential
1	Maambooy	Jamaame	Potential
1	Maanyagaabo	Jilib	Closed
1	Maanyagaabo	Jilib	Potential
1	Madhooka	Jilib	Closed
1	Madhooka	Jilib	Open
2	Madhooka	Jilib	Potential
2	Malenda	Jilib	Potential

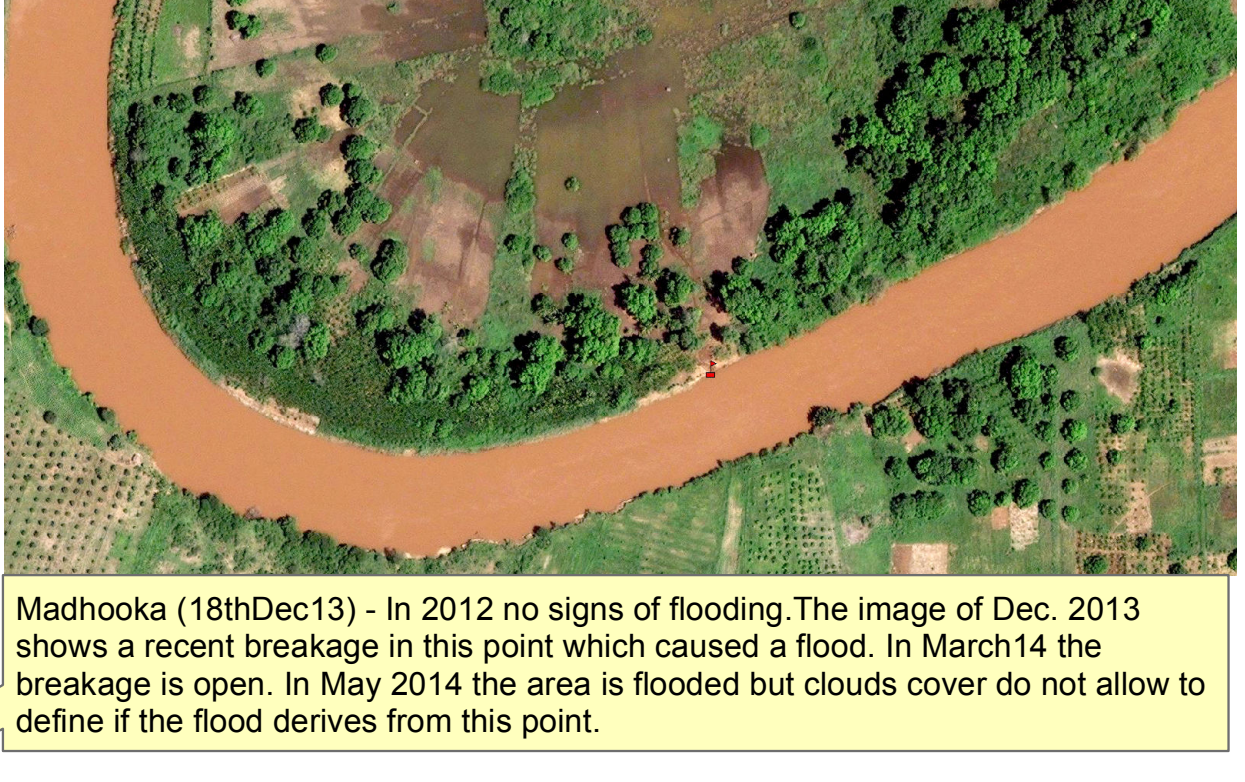
COUNT	NEAREST SETTLEMENT	DISTRICT	STATUS 2014
3	Manaane	Bu'aale	Potential
1	Manyiika	Jamaame	Potential
1	Mareerey	Jilib	Potential
1	Mashane	Bu'aale	Potential
1	Mubaarak	Jilib	Potential
1	Munfuudhi	Bu'aale	Potential
2	Muuna	Jilib	Potential
1	Nasiib	Jilib	Potential
1	Nasiib Buundo	Jilib	Potential
1	Qalaaliyow	Jilib	Potential
1	Qalanja	Jilib	Closed
1	Raxoole	Bu'aale	Potential
1	Sciongolo Dunia	Jilib	Potential
1	Seylac	Jilib	Closed
1	Shaleday	Jilib	Potential
1	Shangaani	Bu'aale	Closed
1	Wagadey	Jilib	Potential
1	Xaramka	Jilib	Potential
1	Yaagle	Jilib	Closed
1	Yaagle	Jilib	Potential



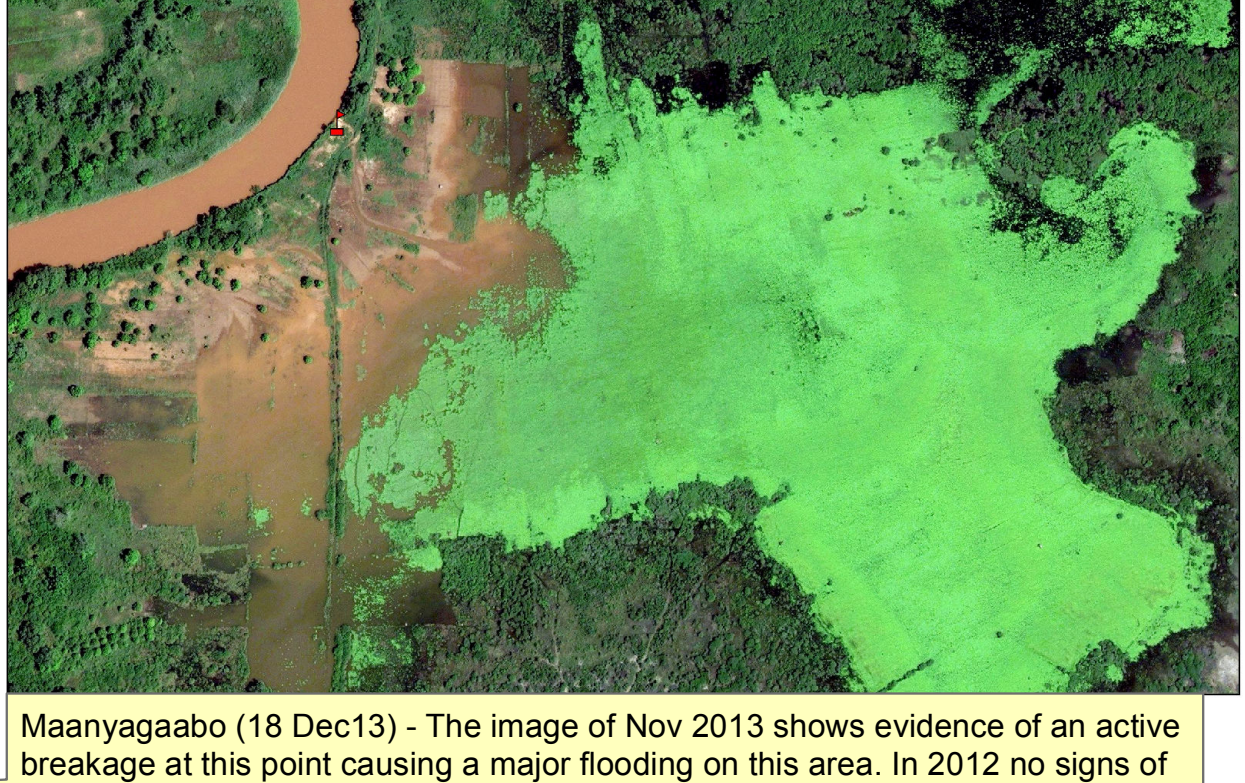
Mashane (13 Feb 13) - The analysis of 2012 shows there is a water overflow spreading from this area and causing a serious flooding. DEM confirm this observation. In 2013 are still visible signs of 2012 flooding while in 2014 a new flooding occurred. Very vulnerable area.



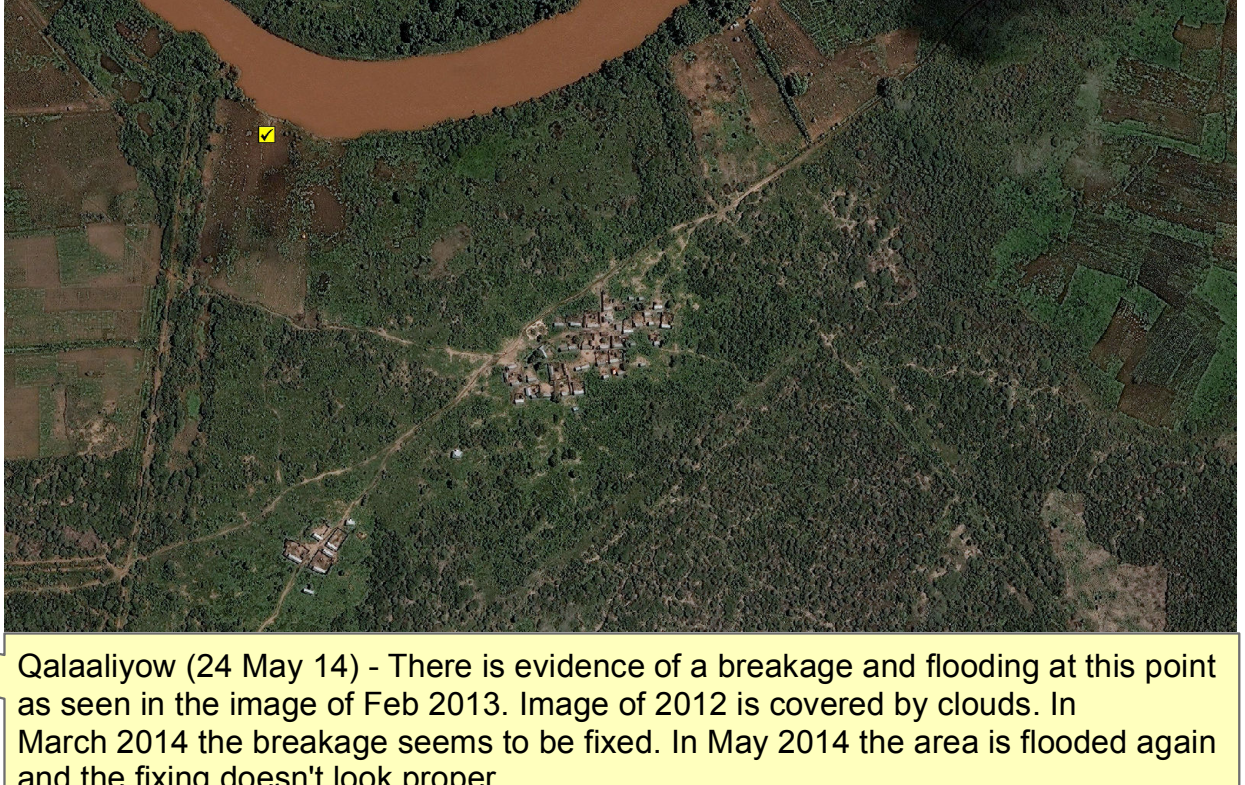
Xaramka (1st Jan 2014) - The images of 2012, 2013 and 2014 show signs of water spillage branching from this point. In Jan 2014 there are signs of a fresh flooding. DEM confirms the vulnerability of this point, probably used as a canal for agricultural purposes (Dhasheeg).



Madhooka (18th Dec 13) - In 2012 no signs of flooding. The image of Dec. 2013 shows a recent breakage in this point which caused a flood. In March 2014 the breakage is open. In May 2014 the area is flooded but clouds cover do not allow to define if the flood derives from this point.



Maanyagaabo (18 Dec 13) - The image of Nov 2013 shows evidence of an active breakage at this point causing a major flooding on this area. In 2012 no signs of breakages detected. Images of 2014 show that the breakage has been repaired.



Qalaaliyow (24 May 14) - There is evidence of a breakage and flooding at this point as seen in the image of Feb 2013. Image of 2012 is covered by clouds. In March 2014 the breakage seems to be fixed. In May 2014 the area is flooded again and the fixing doesn't look proper.



Gomeeni (19 Feb 13) - Images of 2012-13-14 show signs of water overflow branching from this area, indicating that previous major floods took place from here. However, no signs of recent flooding have been detected.

Breakages 2014

Closed

Open

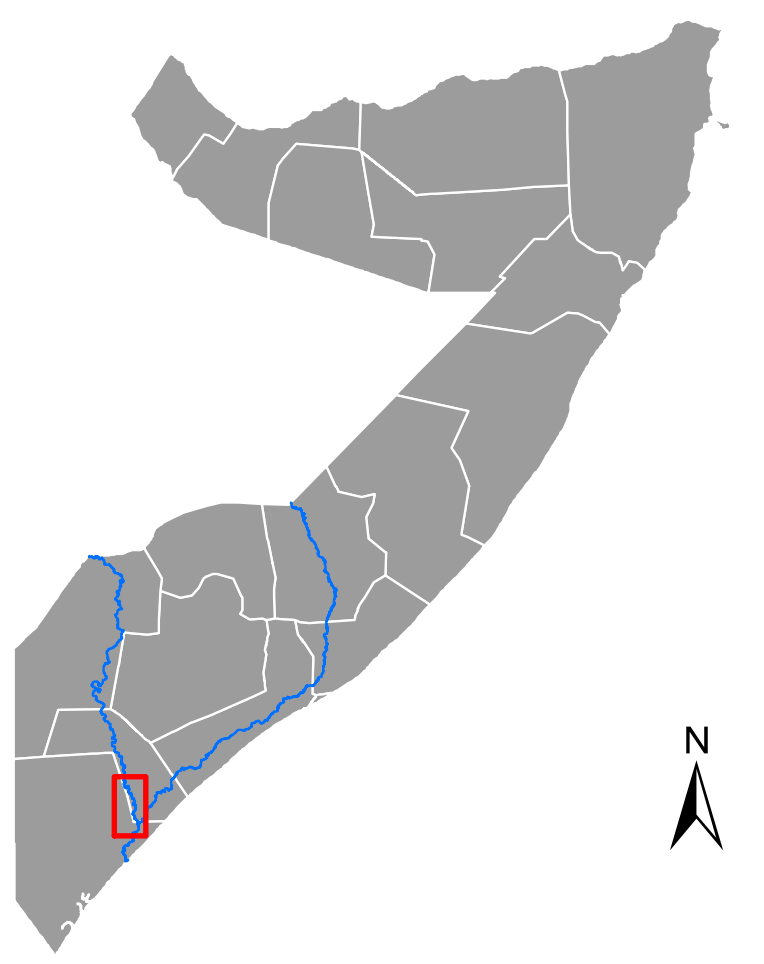
Potential

Legend

Settlement

Major town

River



Map Reference: WAT-BREAKAGES-JUBA-2014-20141016-A0-002
Map Produced by: The Somalia Water and Land Information Management Project (SWALIM).
SWALIM is implemented by the United Nation's Food & Agriculture Organization
and is funded by the European Commission with co-funding provided by UNICEF.

